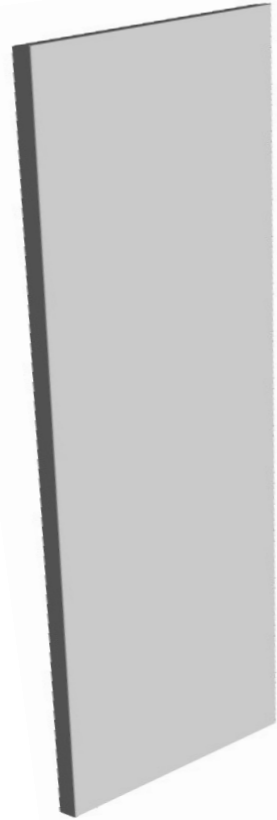


# Wall Cabinet Component & Spacer Panels

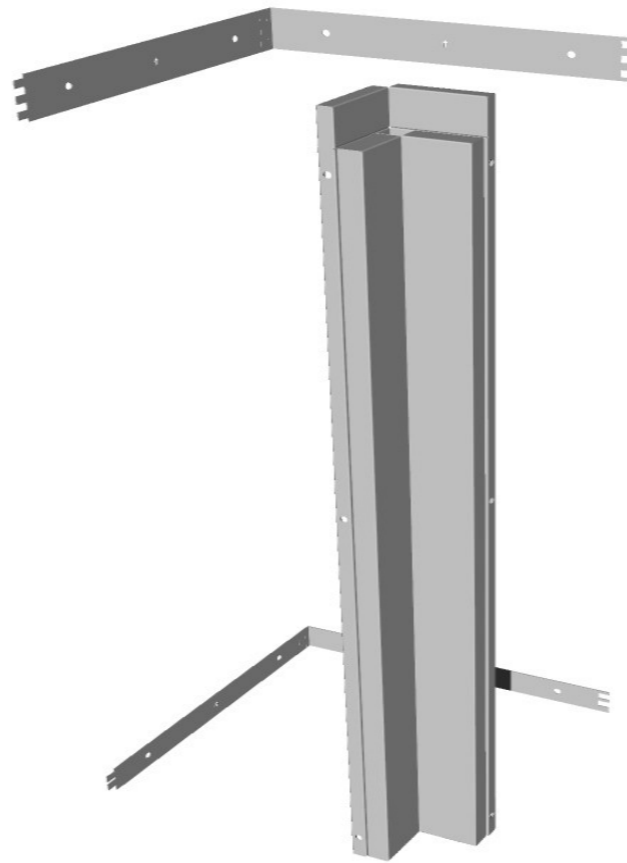
A) SWC42EP



C) SWC12ECR



D) SWC3SPF90



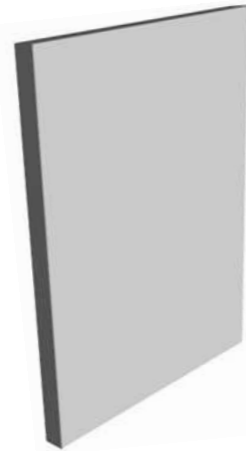
E) SWC3SPF



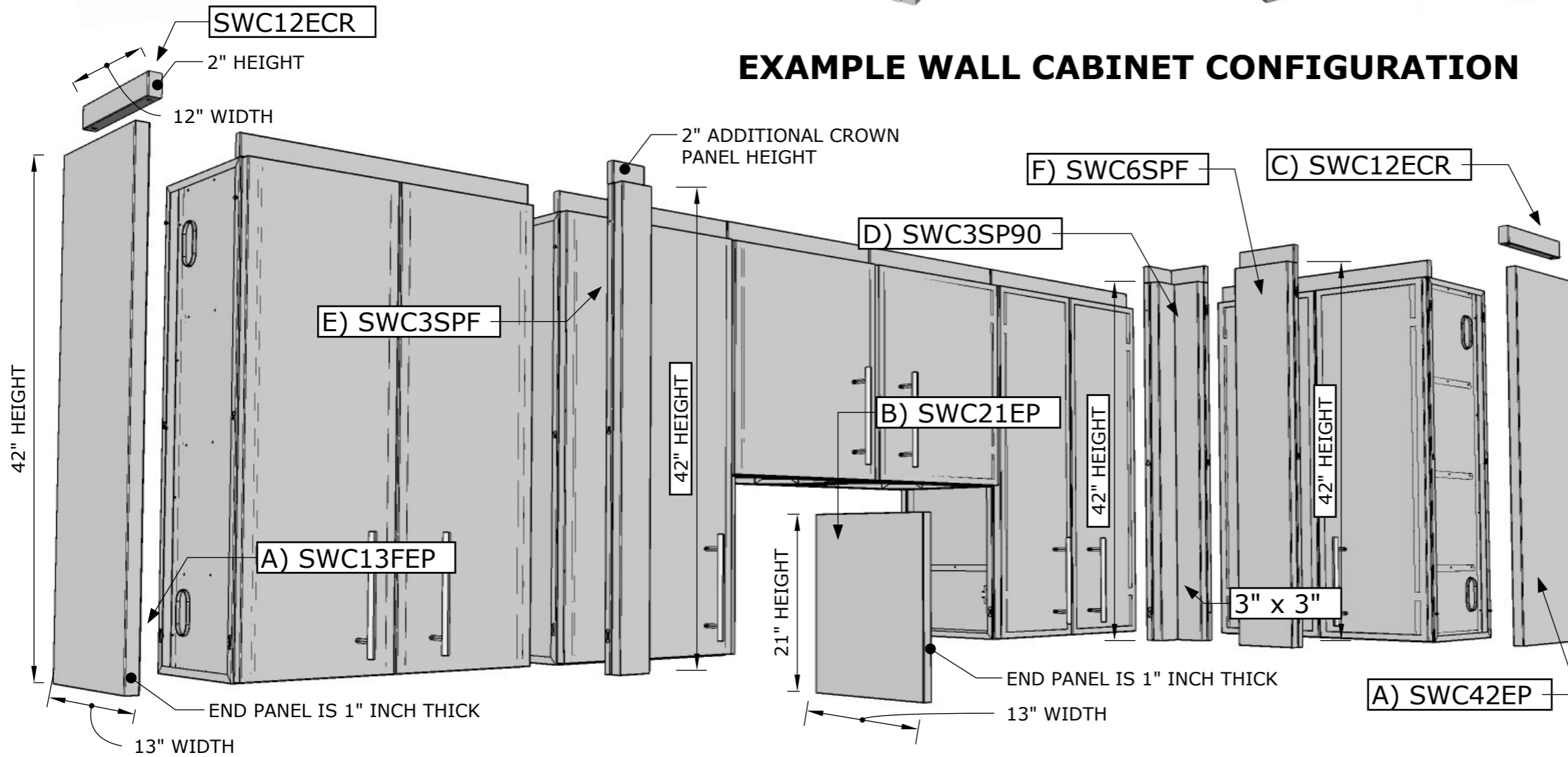
F) SWC6SPF



B) SWC21EP



## EXAMPLE WALL CABINET CONFIGURATION



**SUNSTONE METAL PRODUCTS**  
 16004 CENTRAL COMMERCE DR.  
 PFLUGERVILLE, TEXAS 78660  
 Tel: 888.934.9449  
 Bus: 512.487.5116  
 Fax: 512.487.7016

### PRODUCT

Wall Cabinet Spacer &  
 Component Group

### DESCRIPTION

Match below Item Numbers with  
 corresponding Panels and Componets

- A) **SWC42EP** -42" Height End Panel
- B) **SWC21EP** -21" Height End Panel
- C) **SWC12ECR** -13" End Crown Panel
- D) **SWC3SPF90** -3" X 3"Corner Spacer
- E) **SWC3SPF** -3" Full Height Spacer
- F) **SWC6SPF** -6" Full Height Spacer

### PRODUCT DIMENSIONS

See Drawing Diagram for  
 Dimensions

### MATERIAL SPECS

304 Stainless Steel entire  
 structure, 18 Gauge for Door  
 Panel, 18 Gauge for Cabinet  
 Box, 18 Gauge for Shelf,  
 Handles are made of Solid 304  
 Stainless Steel Bar.