

# SINGLE & DOUBLE SIDE BURNERS

## PRODUCT

1SSB-LP/NG  
2CSB-LP/NG

## CUT-OUT DIMENSIONS

ITEM NO.	WIDTH	DEPTH	HEIGHT
2CSB-LP/NG	12"	20-1/4"	8"
1SSB-LP/NG	10"	16-1/8"	4"

## MANUFACTURE CONTACT

SUNSTONE METAL PRODUCTS LLC.  
TECH SUPPORT: 888-934-9449  
WWW.SUNSTONEMETALPRODUCTS.COM

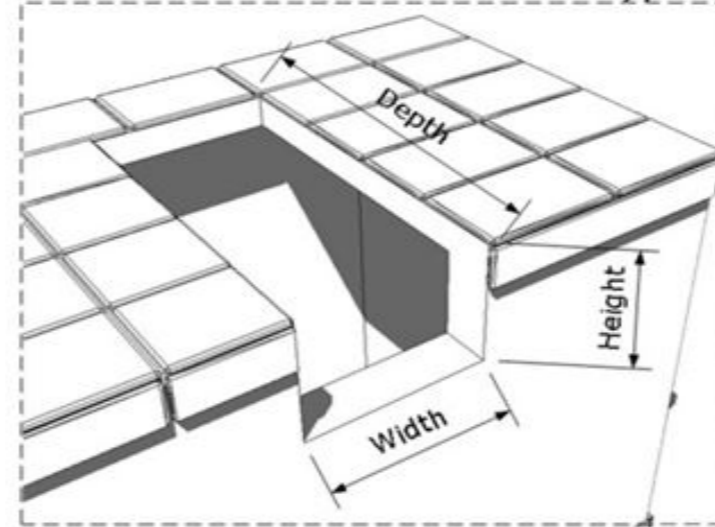
## WARRANTY

- MAIN BURNERS-----LIMITED LIFETIME
- COOKING GRATES -----LIMITED LIFETIME
- BASE & PARTS-----LIMITED LIFETIME
- VALVES, KNOBS ETC. ---1 YEAR WARRANTY

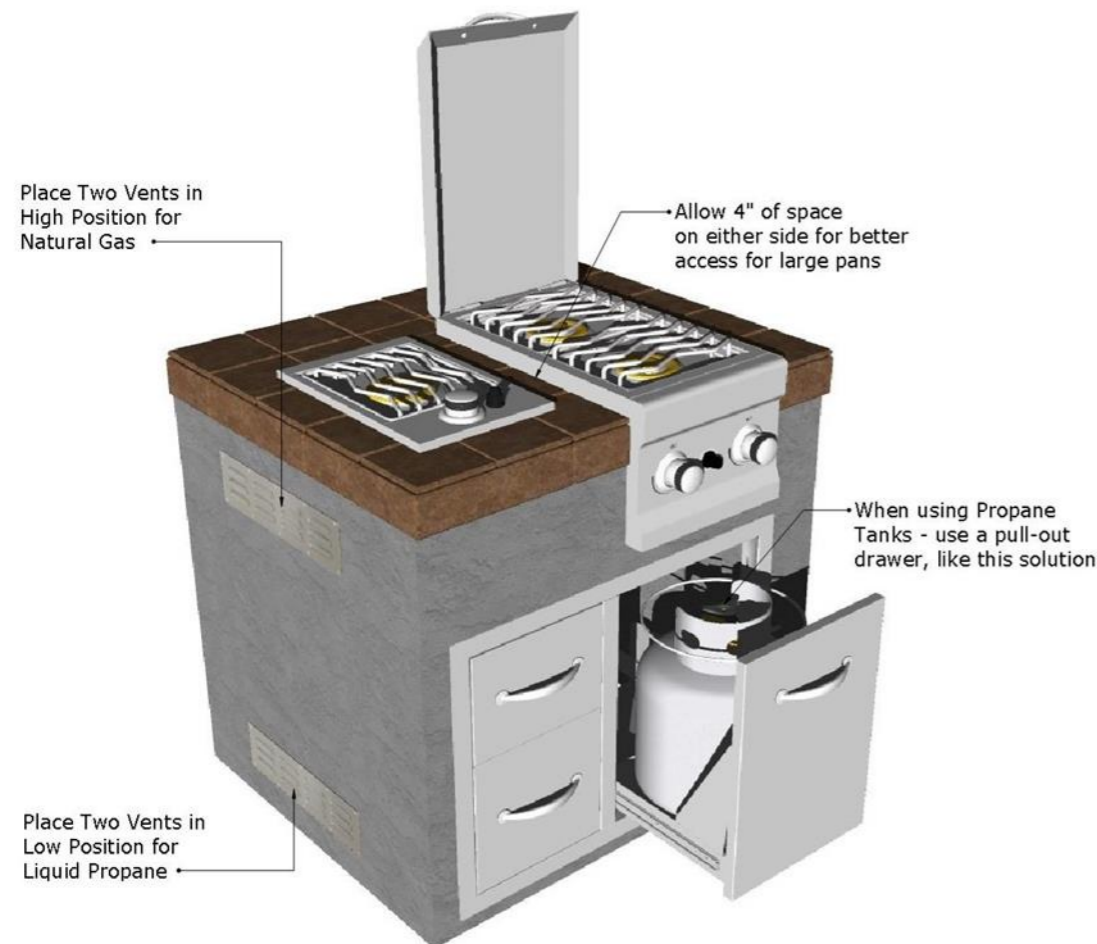
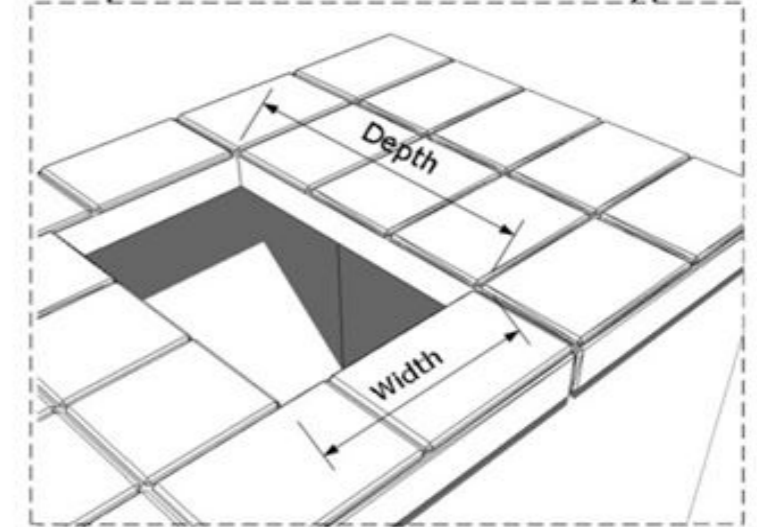
## INSTALLATION REQUIRMENTS

- 1. COMBUSTABLE MATERIALS:** For Wood Framed Island Construction it is Extremely important Not to use any wood within 24" of Side Burner. Wood frame is fine for Bar/Sink areas and or Storage compartments. If your island is mostly wood, just substitute for Metal Studs while within the 24" of Side Burner. If the island structure is against any Combustible Materials - be sure to provide protection and keep a minimum distance of 12" away.
- 2. ISLAND VENTILATION:** For every Gas-Related appliance Grill or Side Burner you are required to have at least Two Air-Vents in the Island, within 24" of Appliance. Place Two Vents in Low position within 6" from base on exterior wall when using Liquid Propane and place Two Vents in High position within 6" below the counters bottom edge for Natural Gas. Do not Build Enclosure under Side Burners, Side burners are meant to Free-Hang from counter top surface.
- 3. GAS SAFETY & ACCESS:** For either Natural Gas or Liquid Propane type, it is required you have clear access to all interior island Gas-Plumbing, we recommend placing one of Sunstone's Single Access Vented Doors. Also have at least One Safety-Shut Off Valve Present and within easy access, if this appliance is being installed in a High-Traffic location like for Residential Community, it is important to have installed a Shut-Off Timer set for Auto-Shut off in 20 Minutes.

Slide-In Side Burner Cut-out Type



Drop-In Side Burner Cut-out Type



### Minimum Distances to Combustible Materials or other Appliance ONLY, Non-Combustible materials do not apply!

From Counter to Overhead Structure	5' Feet Min. Clearance
From Counter to Outdoor Vent Hood	36" Min. Clearance
From Floor to Underside of Overhead Structure	8' Feet Min. Clearance
From Grill to Vent Hood Width	4"-6" Min. Clearance
From Appliance to Appliance	3" Min. Clearance
From Appliance to Combustible Material	24" Min. Clearance

**ATTENTION:** THE SIDE BURNER MUST BE INSTALLED ACCORDING TO THE INSTALLATION GUIDE. IF YOUR SIDE BURNER INSTALLATION DOES NOT MEET THE BASIC SETUP INSTRUCTIONS ALL WARRANTIES MAY BE VOID.

**WARNING:** Never build shelf or enclose interior space under the BBQ Cut-Out. The Side Burner is Self-Rimming and is supported by the top counter surface on the Back and Sides, the front of burner is designed to Free-Hang. The bottom of Burner needs to be open to allow for proper ventilation.

**ATTENTION:** Take special precaution when installing burner in open Breezy area, check the direction of Prevailing Wind, if back of burner is facing any oncoming wind or breeze, be sure to protect the back of burner and erect a partition wall.

**SEE ADDITIONAL INFORMATION IN YOUR SUNSTONE PRODUCT MANUAL.....**