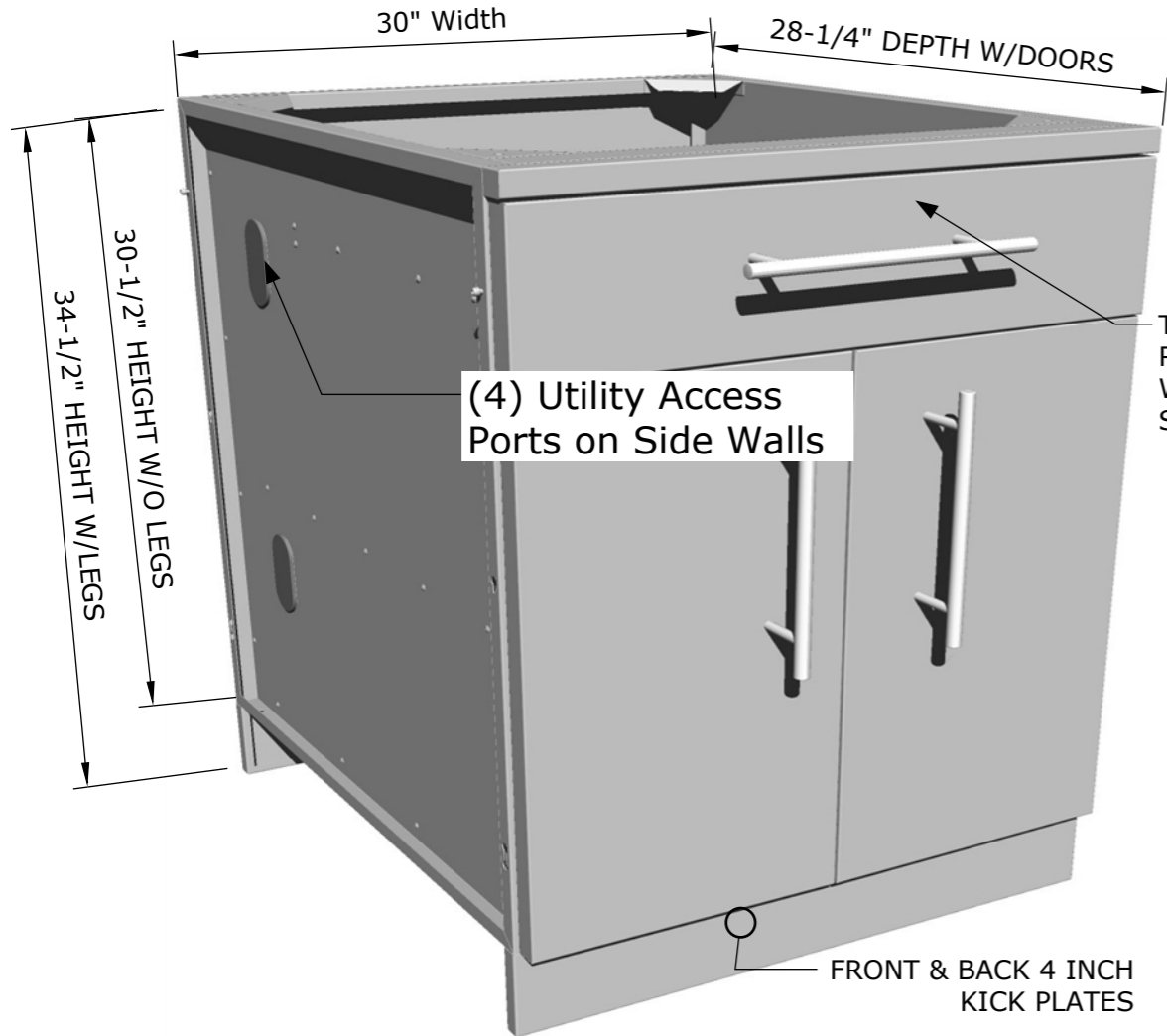
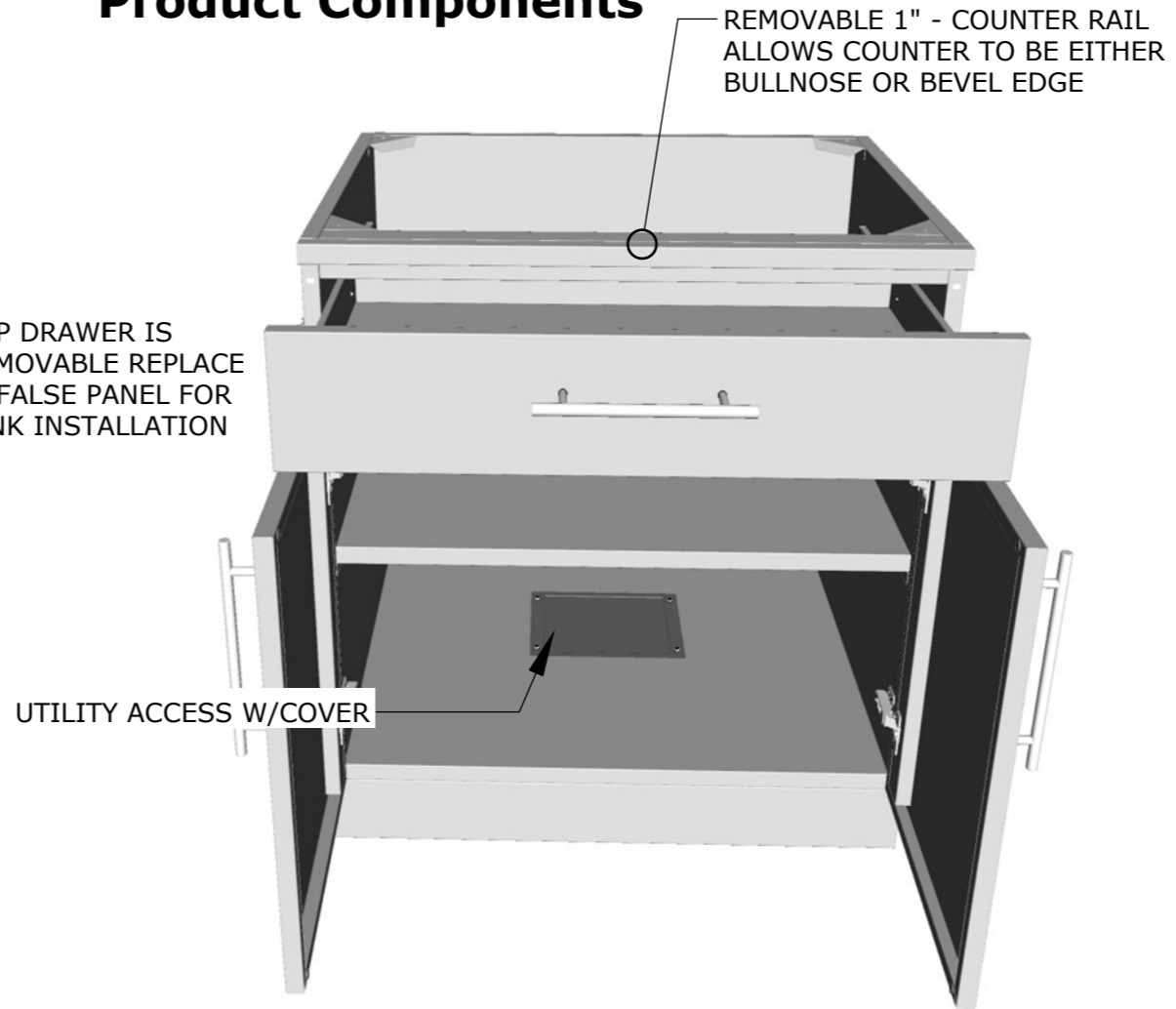


## Product Dimensions



## Product Components



**SUNSTONE®**

**SUNSTONE METAL PRODUCTS**  
16004 CENTRAL COMMERCE DR.  
PFLUGERVILLE, TEXAS 78660  
Tel: 888.934.9449

### PRODUCT

30" Double Door Cabinet w/Shelf, Drawer & False Top Panel Option  
**Item No. SBC30CDD**

### DESCRIPTION

30" Double Door Cabinet with Top Drawer/Shelf & optional False Panel

- Lifetime Structure Warranty
- 304 Stainless Steel Structure
- 304 SS Rod Handles
- Front & Back Kick-Plates
- Easy Pin-Lock Installation
- Soft-Close Drawer Tracks
- Covered Access Ports
- Adjustable Peg-Legs
- Optional Wheel Casters

### INCLUDED COMPONENTS

- Front Kick Plates
- Back Solid Kick Plate
- (4) Adjustable Peg Legs
- Center Shelf

### PRODUCT DIMENSIONS

30"W x 28-1/4"D  
(w/Doors) x 34-1/2"H  
(w/Legs) or 30-1/2"H (no  
Legs) or Upto 36" Max  
Adjustable Height

### INSERT DIMENSIONS

28"Width x 18"Depth

### INSERTABLE PRODUCTS

Side Burner - SUN13SSB  
Premium Sink - B-PS21  
Standard Sink - A-SS17  
Drop-In Ice Chest - A-IC

### MATERIAL SPECS

304 Stainless Steel entire structure, 18 Gauge for Door Panel, 18 Gauge for Cabinet Box, 18 Gauge for Shelf, Handles are made of Solid 304 Stainless Steel Bar.

## Cabinet Conversion for Drop-In Appliance

