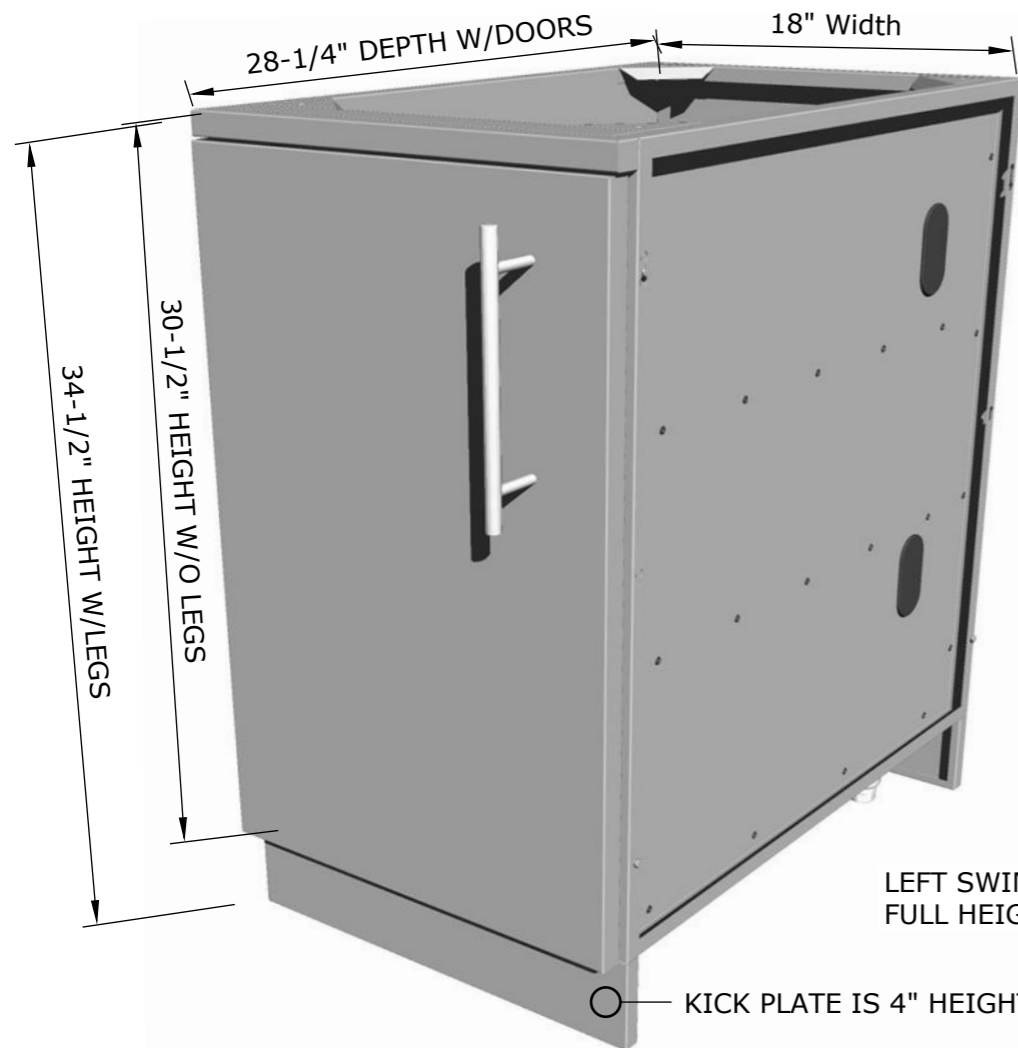
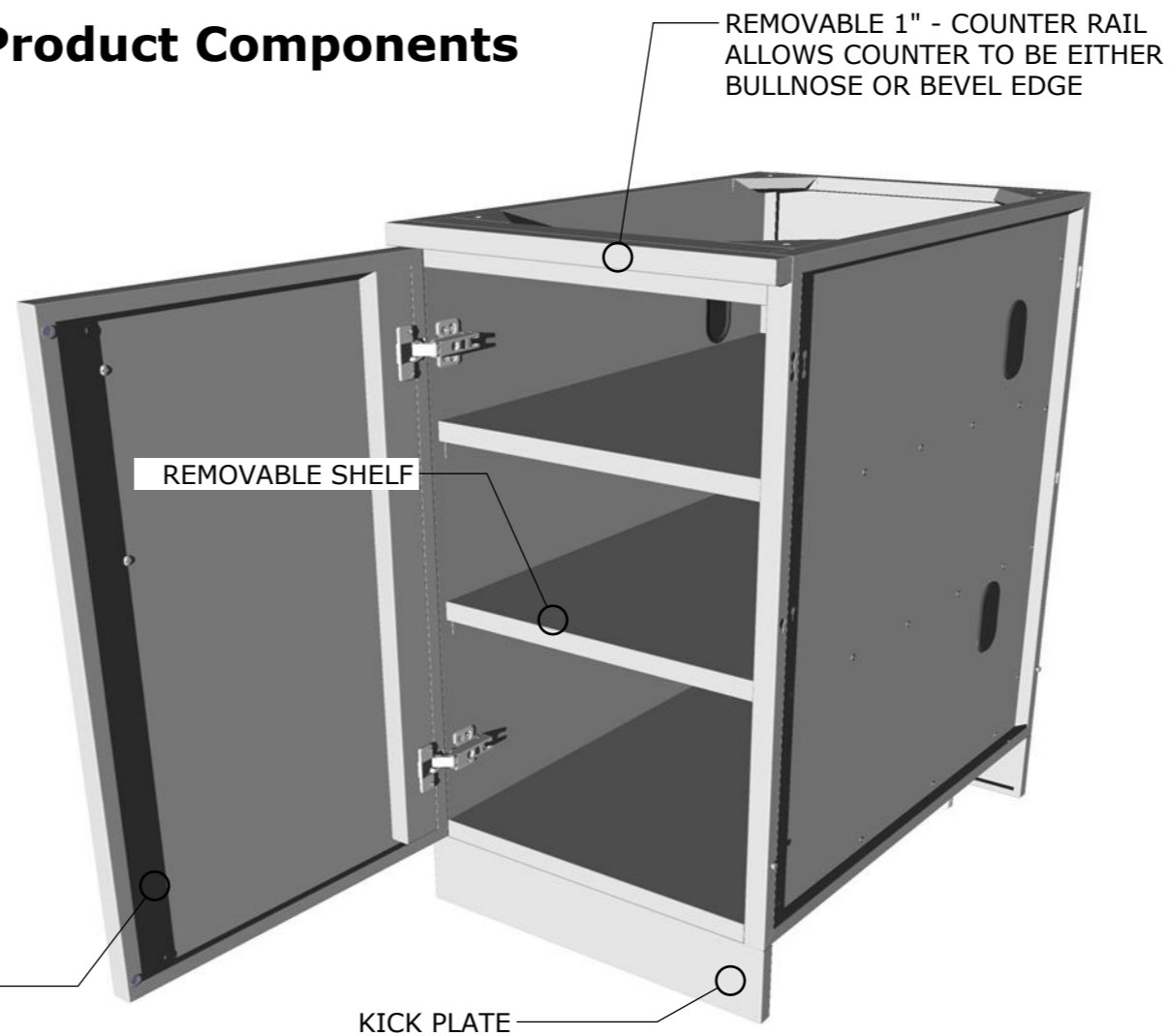


Product Dimensions



Product Components



SUNSTONE METAL PRODUCTS
 16004 CENTRAL COMMERCE DR.
 PFLUGERVILLE, TEXAS 78660
 Tel: 888.934.9449
 Bus: 512.487.5116
 Fax: 512.487.7016

PRODUCT

18" Full Height Left Swing Door Cabinet

Item No. SBC18FSDL

DESCRIPTION

18" Full Height Left Swing Door Cabinet with Center Shelf Included.

- Lifetime Structure Warranty
- 304 Stainless Steel Structure
- 304 SS Rod Handles
- Front & Back Kick-Plates
- Easy Pin-Lock Installation
- Soft-Close Drawer Tracks
- Covered Access Ports
- Adjustable Peg-Legs
- Optional Wheel Casters

INCLUDED COMPONENTS

- Front Kick Plate
- Back Kick Plate
- (4) Adjustable Peg Legs
- (1) Shelf

PRODUCT DIMENSIONS

18"W x 28-1/4"D
 (w/Door) x 34-1/2"H
 (w/Legs) or 30-1/2"H (no
 Legs) or Upto 36" Max
 Adjustable Height

INSERT DIMENSIONS

16"Width x 18"Depth

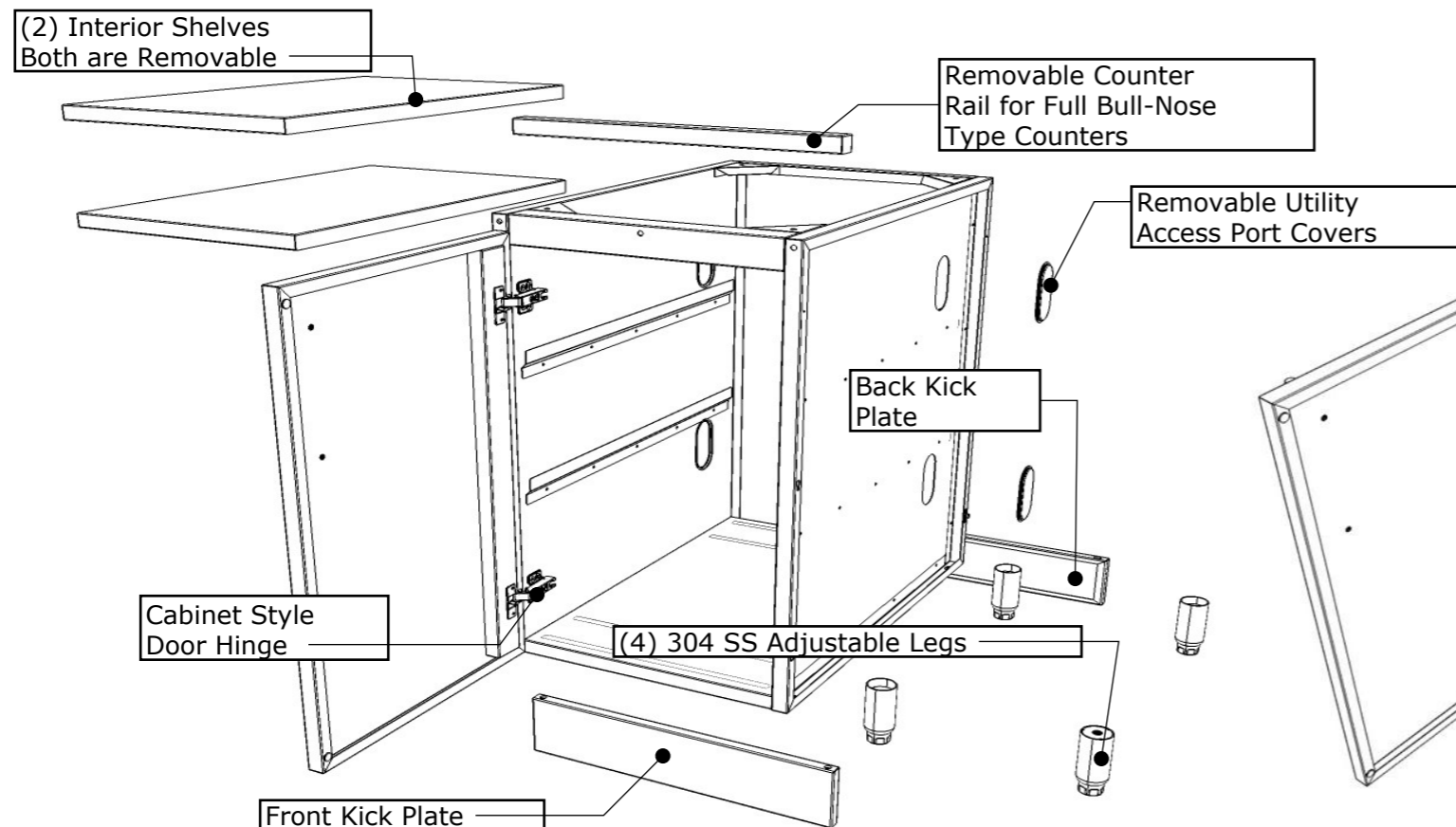
INSERTABLE PRODUCTS

Single Side Burner - 1SSB

MATERIAL SPECS

304 Stainless Steel entire structure, 18 Gauge for Door Panel, 18 Gauge for Cabinet Box, 18 Gauge for Shelf, Handles are made of Solid 304 Stainless Steel Bar.

Product Components



Interior Dimensions

