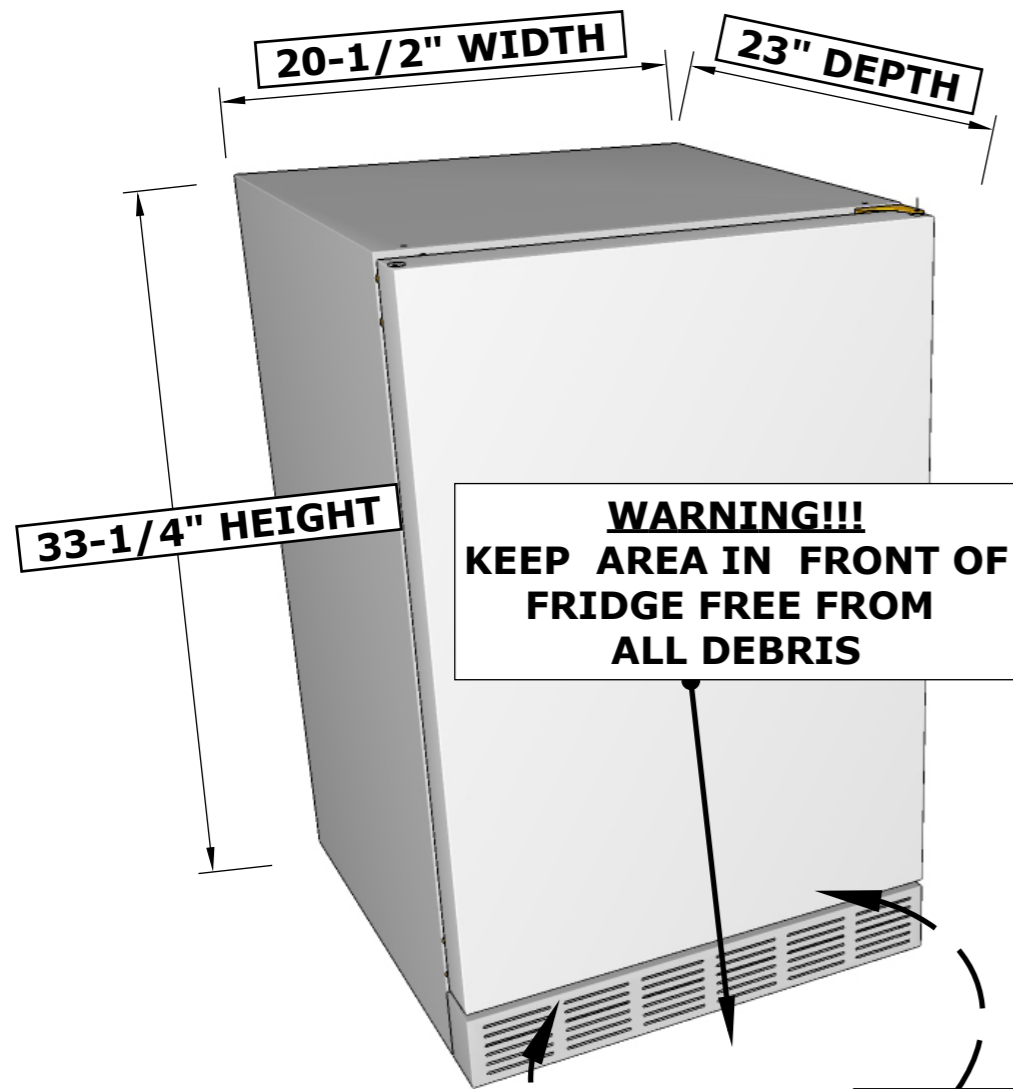
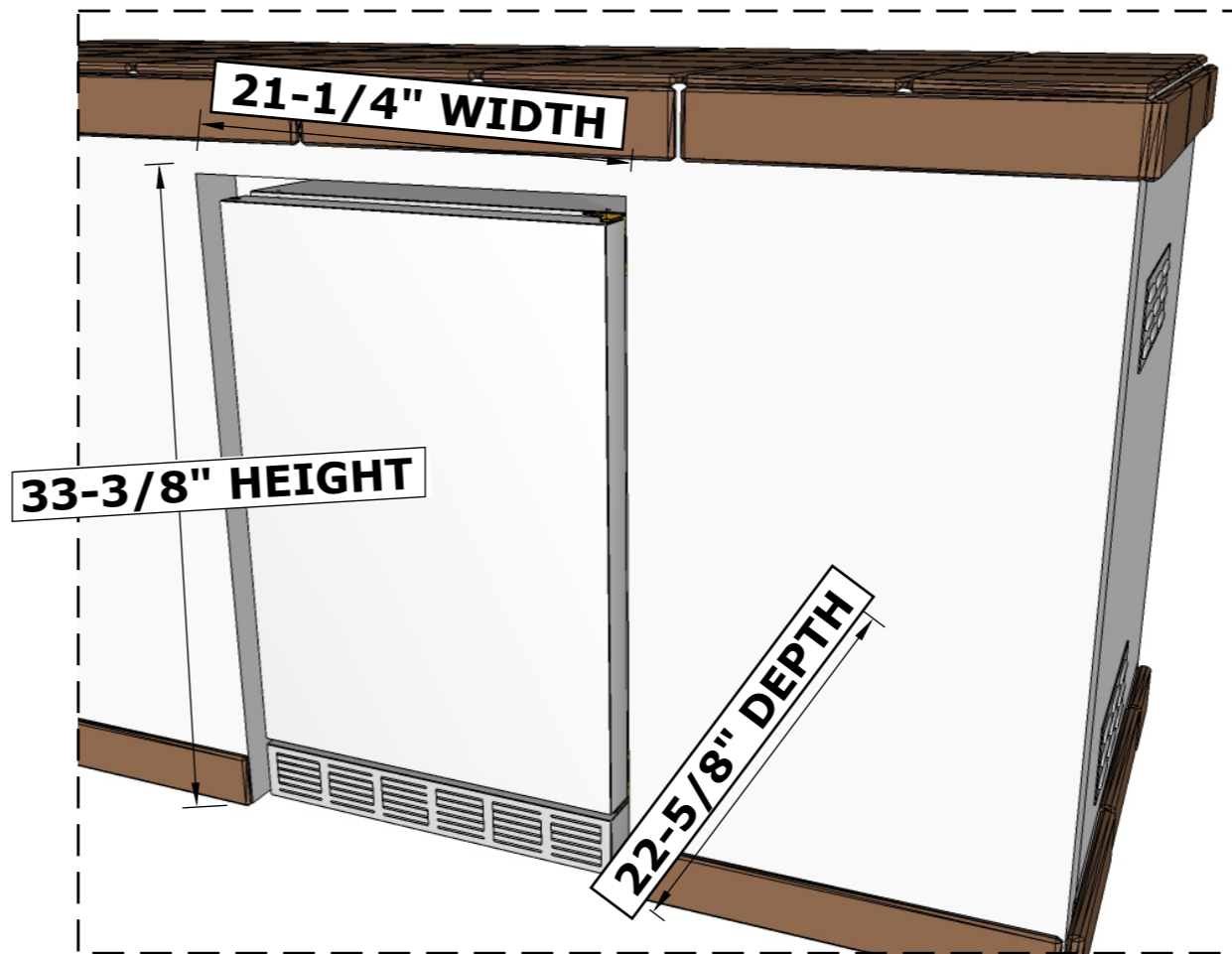


**PRODUCT DIMENSIONS**



**WARNING!!!**  
KEEP AREA IN FRONT OF  
FRIDGE FREE FROM  
ALL DEBRIS

**CUT-OUT DIMENSIONS**

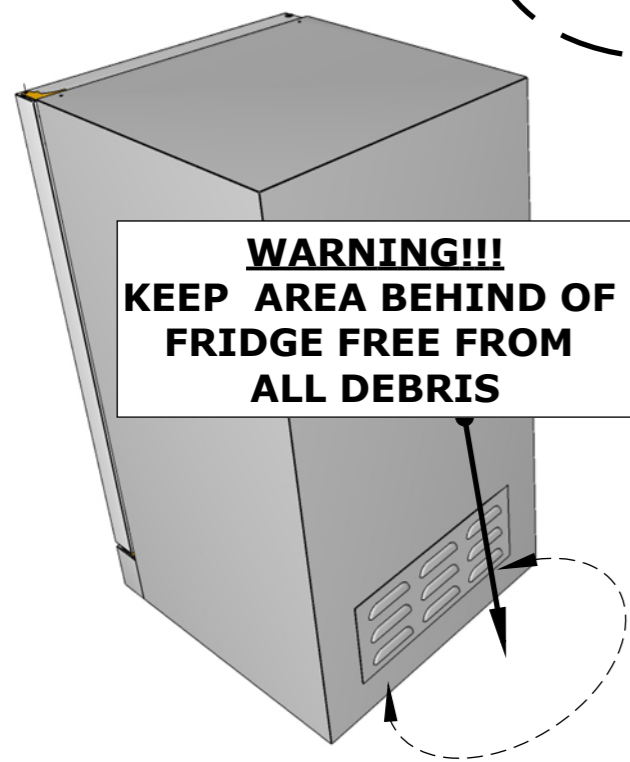


**SUNSTONE METAL PRODUCTS LLC.**  
16004 Central Commerce Dr.  
Pflugerville, TX. 78665  
Tel: 888.934.9449  
Bus: 512.487.5116  
Fax: 512.487.7016

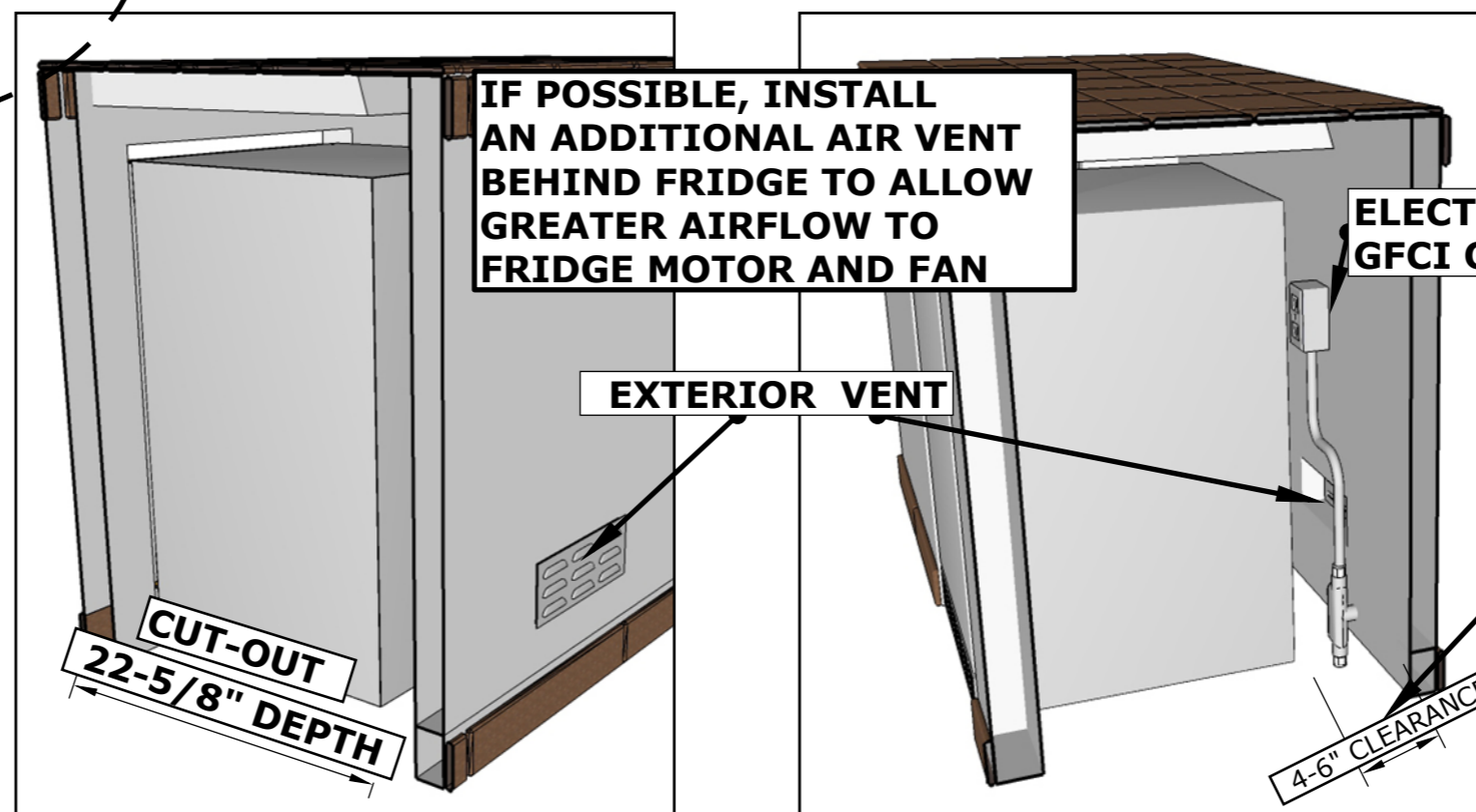
**PRODUCT**  
Outdoor Rated Refrigerator  
Item No. SAPFR21PRO

**DESCRIPTION**  
304 Stainless Steel Exterior,  
Kitchen Quality Interior,  
Ample Storage for Chilled  
Drinks

*20-1/2" W x 32-1/2" H x 22-3/4" D (Product Size)  
21-1/4" W x 33-3/8" H x 23-5/8" D (Cut-out)  
99 LBS (Product Weight)*



**WARNING!!!**  
KEEP AREA BEHIND OF  
FRIDGE FREE FROM  
ALL DEBRIS



**IF POSSIBLE, INSTALL AN ADDITIONAL AIR VENT BEHIND FRIDGE TO ALLOW GREATER AIRFLOW TO FRIDGE MOTOR AND FAN**

**ELECTRICAL GFCI OUTLET**

**ATTENTION!!!**  
LEAVE 4" TO 6" INCHES OF CLEARANCE BEHIND FRIDGE FOR AIR FLOW. IF FRIDGE IS TIGHT AGAINST WALL, FRIDGE WILL MAY NOT OPERATE CORRECTLY AND CAN MALFUNCTION FROM OVERHEATING.