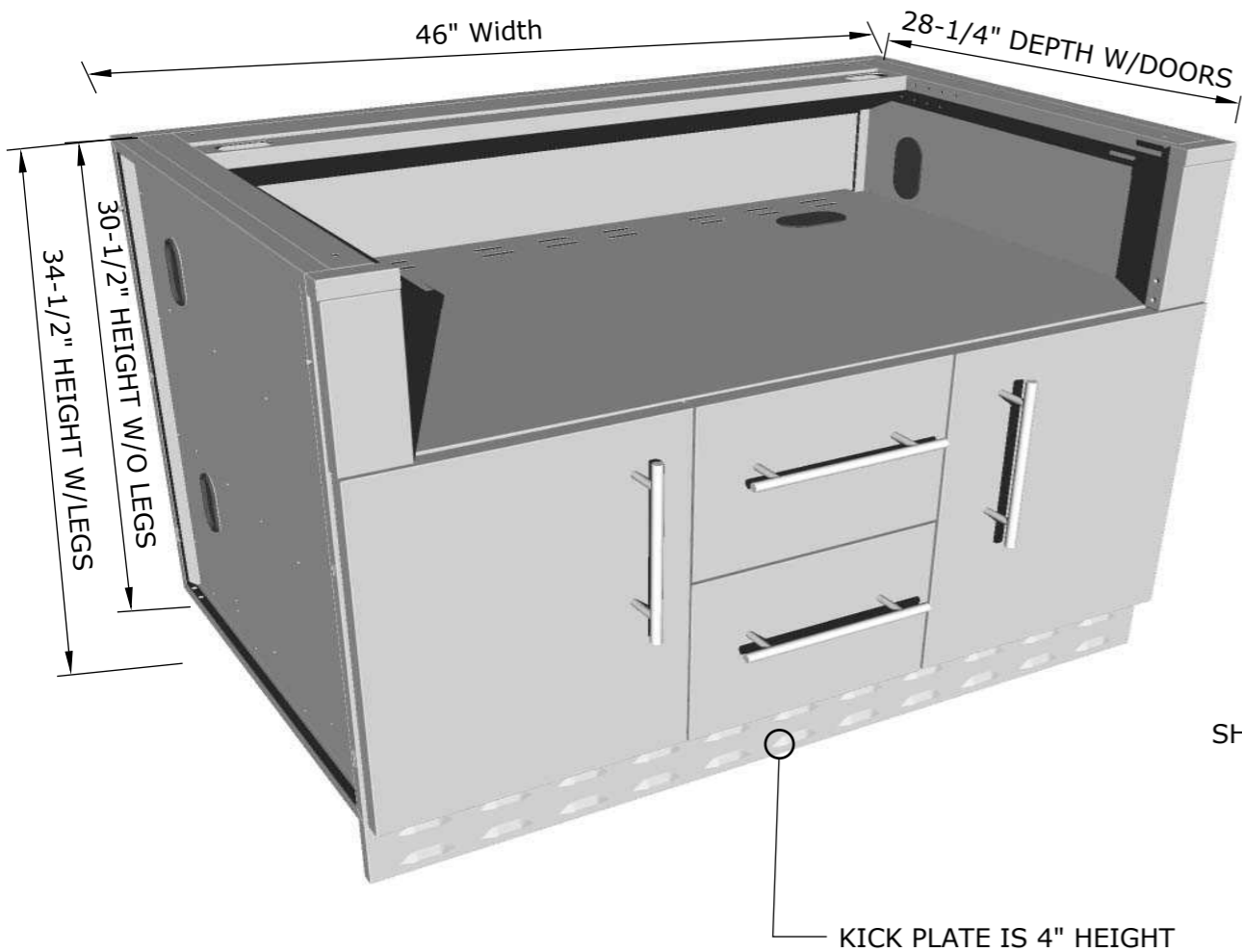
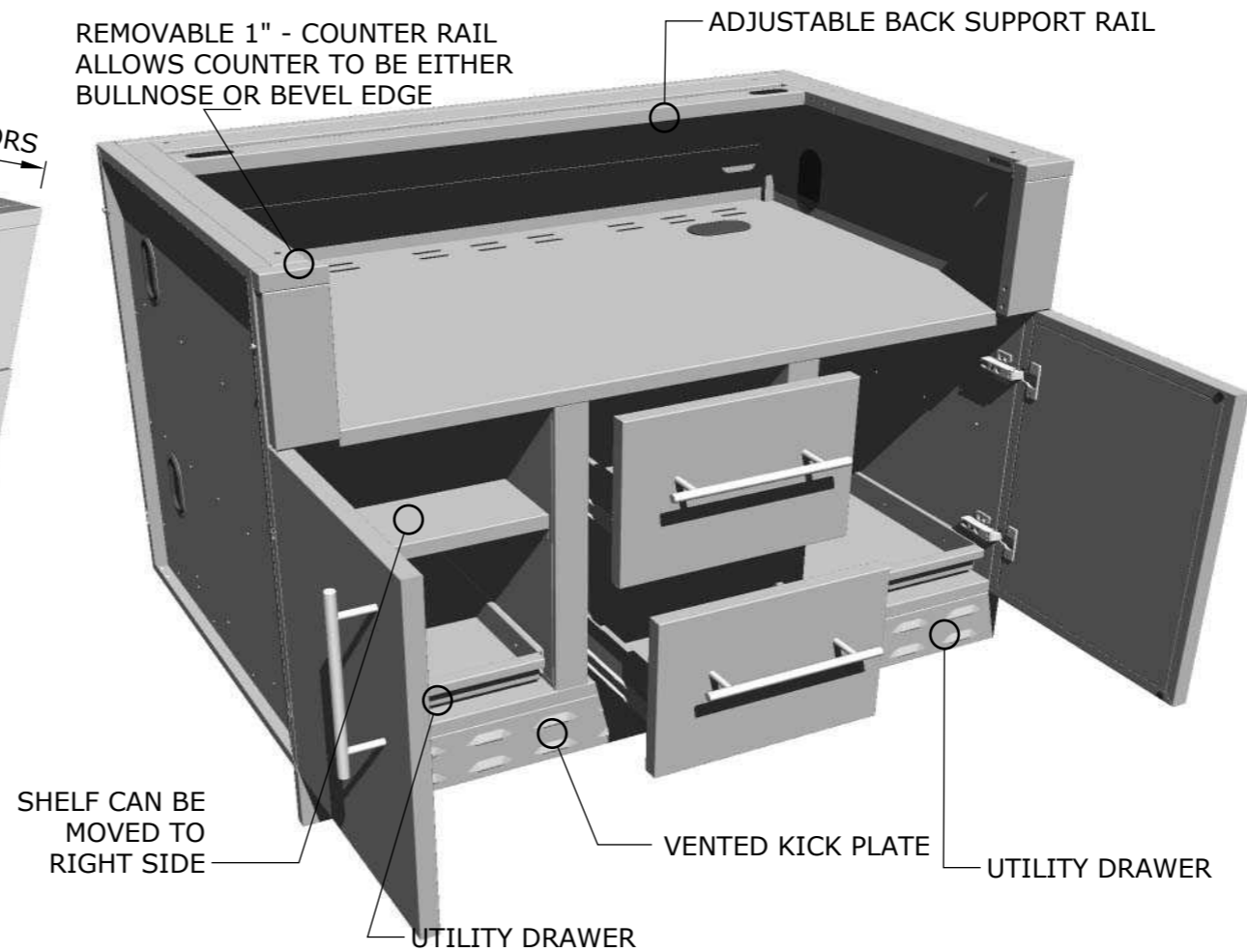


Product Dimensions

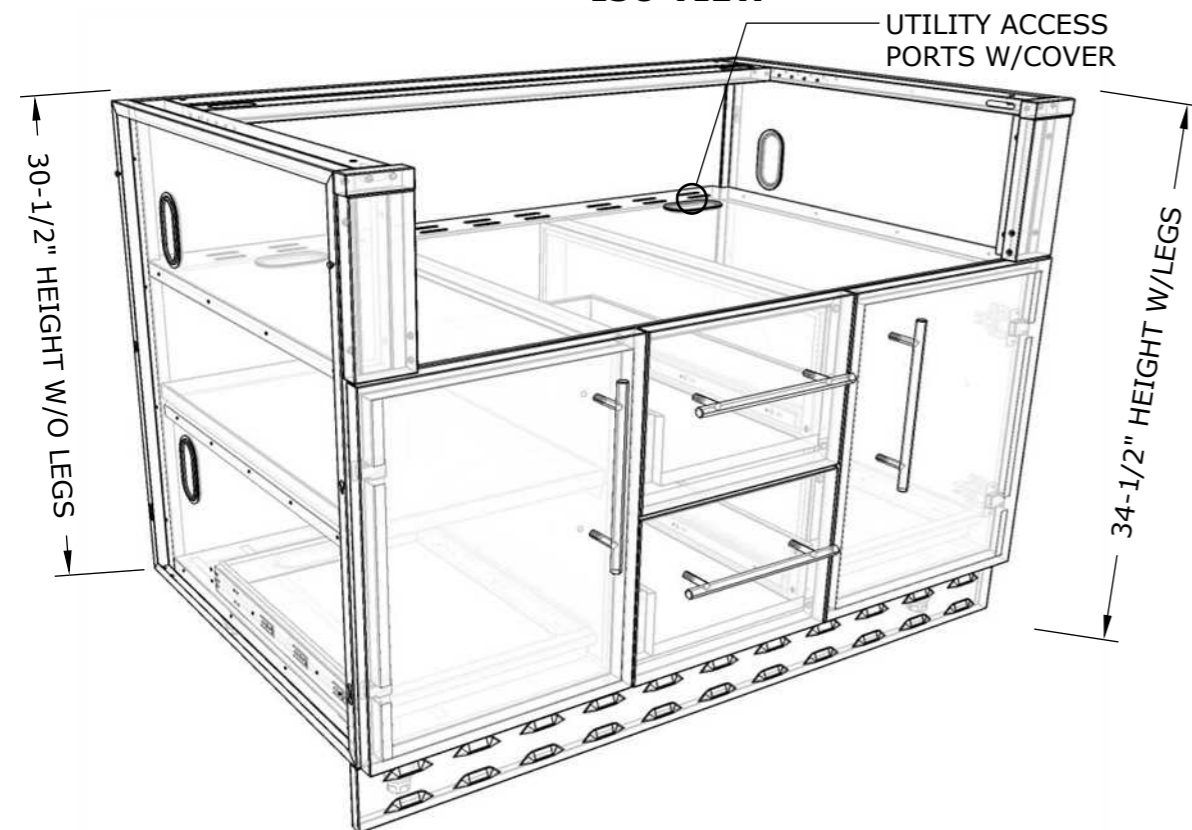


Product Components

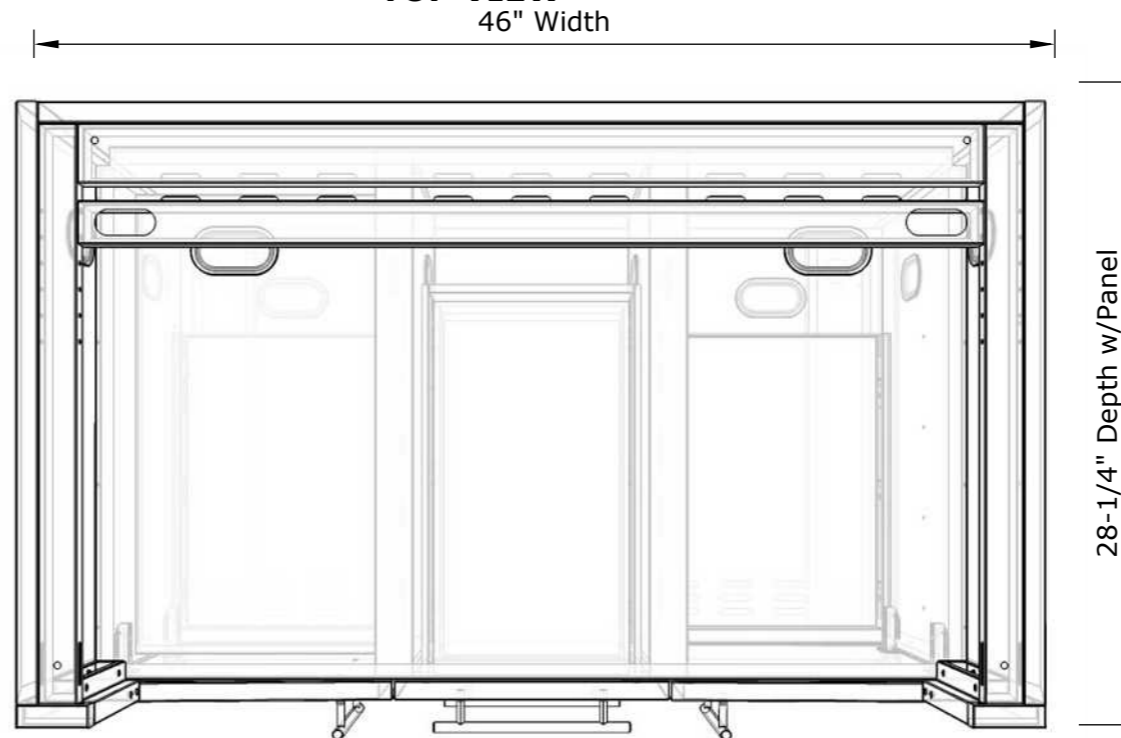


Product Diagrams

ISO VIEW



TOP VIEW



SUNSTONE METAL PRODUCTS
16004 CENTRAL COMMERCE DR.
PFLUGERVILLE, TEXAS 78660
Tel: 888.934.9449
Bus: 512.487.5116
Fax: 512.487.7016

PRODUCT

46" Appliance Cabinet

Item No. SAC46GLPCD

DESCRIPTION

46" Appliance Cabinet for Item No.
SUN5B LP/NG

- Lifetime Structure Warranty
- 304 Stainless Steel Structure
- 304 SS Rod Handles
- Front & Back Kick-Plates
- Easy Pin-Lock Installation
- Soft-Close Drawer Tracks
- Covered Access Ports
- Adjustable Peg-Legs
- Optional Wheel Casters

INCLUDED COMPONENTS

- Front Vented Kick Plate
- Back Solid Kick Plate
- (4) Adjustable Peg Legs

PRODUCT DIMENSIONS

46"W x 28-1/4"D (w/Doors) x 34-1/2"H (w/Legs) or 30-1/2"H (no Legs) or Upto 36" Max Adjustable Height

INSERTABLE PRODUCTS

42" 5 BURNER - SUN5BIR
42" Ruby 5 Burner

(See next page Trim Kit Guide for other insertable product Brands)

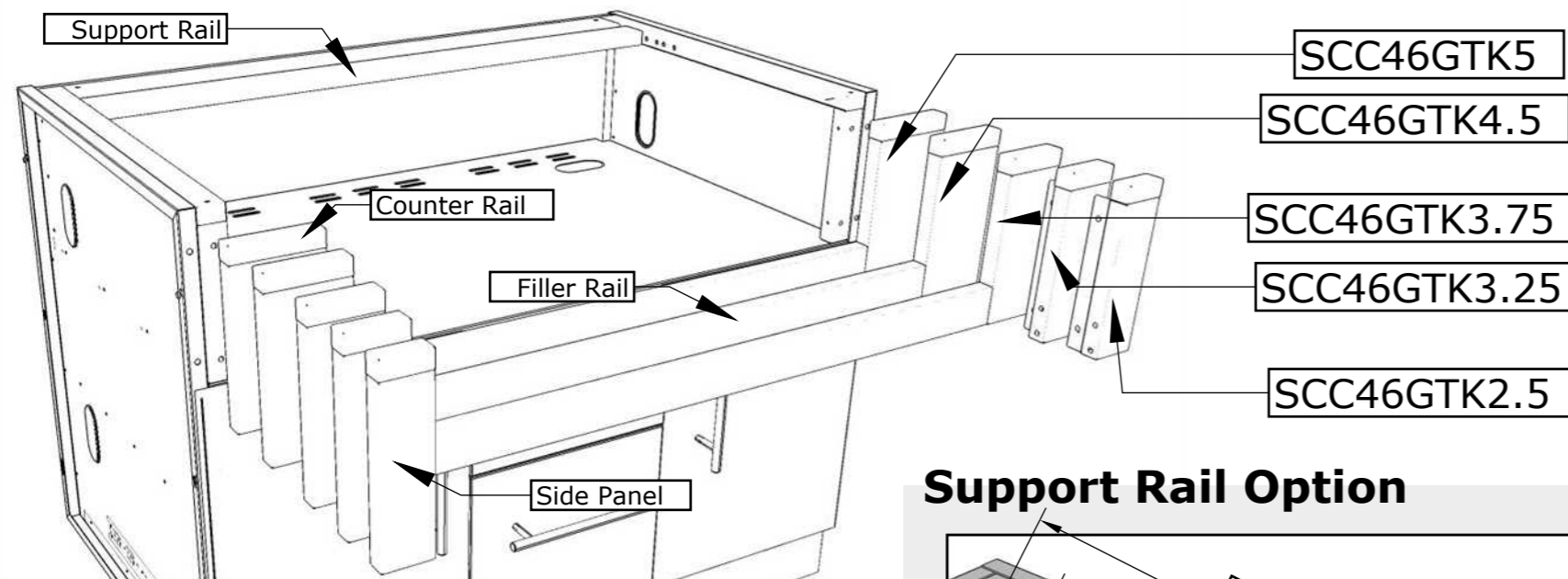
MATERIAL SPECS

304 Stainless Steel entire structure, 18 Gauge for Door Panel, 18 Gauge for Cabinet Box, 18 Gauge for Shelf, Handles are made of Solid 304 Stainless Steel Bar.

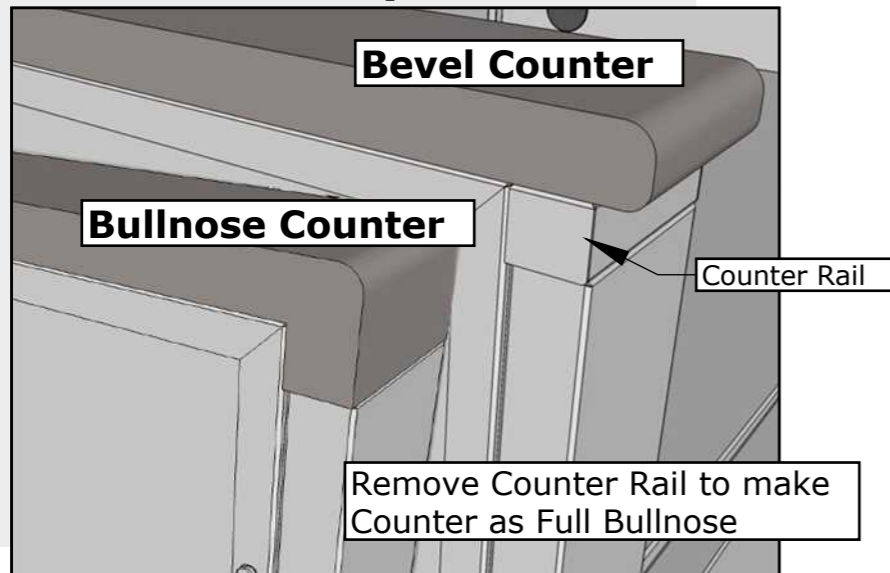
SAC46GLPCD TRIM-KIT Overview

Disclaimer: The trademarks used in the "Product Option" column below belong to their respective owners who do not sponsor nor are they affiliated with Sunstone Metal Products, L.L.C. The specific product Cut-Out Dimensions have not been directly confirmed by any Sunstone Metal Products LLC, representative or employee. Use own discretion to confirm exact product fit.

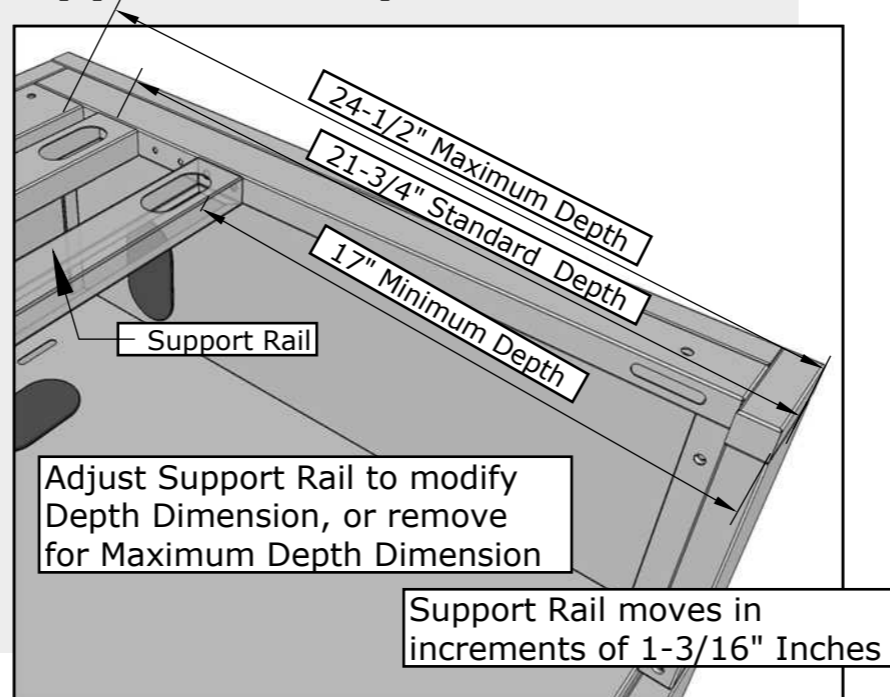
Model Number	Sleeve Cut-Out	Product Option
SCC46GTK2.5	40-1/2" Width x 10-1/4" Height x 24-1/2" Maximum Depth	Alfresco® 42" Grill
SCC46GTK3.25	39-1/2" Width x 10-1/4" Height x 24-1/2" Maximum Depth	Sunstone® 5BIR 42" Grill, Ruby® 5BIR 42" Grill, Bull® 38" Brahma Grill, Coyote® 42" grill
SCC46GTK3.75	38-1/4" Width x 8" Height w/Rail or 10-1/4" Height wo/Rail x 24-1/2" Maximum Depth	Steele® 40" Grill, Blaze® 40" Grill
SCC46GTK4.5	36-7/8" Width x 8" Height w/Rail or 10-1/4" Height wo/Rail x 24-1/2" Maximum Depth	Delta Heat® 38" Grill, AOG® 36" Grill
SCC46GTK5	35-3/4" Width x 8" Height w/Rail or 10-1/4" Height wo/Rail x 24-1/2" Maximum Depth	Lynx® 36" Grill, Sedona® 36" Grill



Counter Rail Option



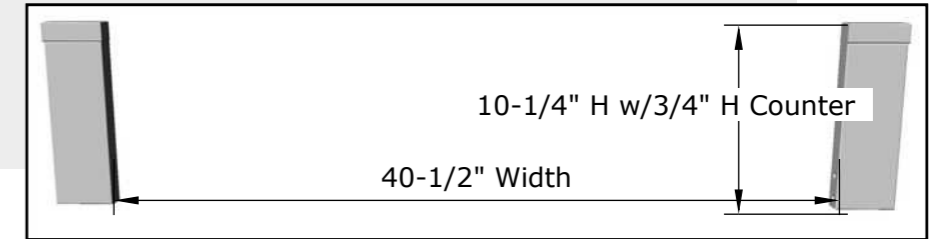
Support Rail Option



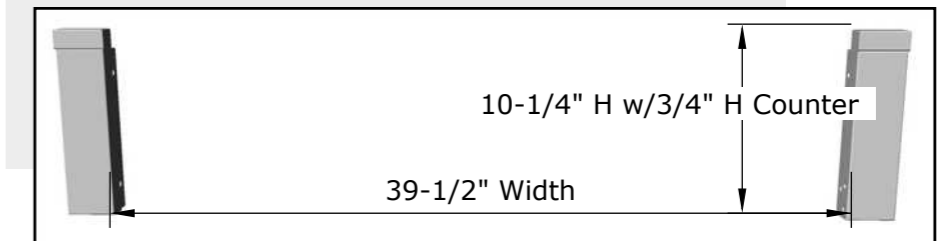
Trim-Kit Sleeve Dimensions

Compatible between 35-3/4" to 40-1/2", 8" to 10 1/4" Max Height with counter at 3/4" Height with Filler Rail installed or removed. (Additional Height can be adjusted by Removing Bottom Filler Rail or by adding a Thicker Counter or Backer Board)

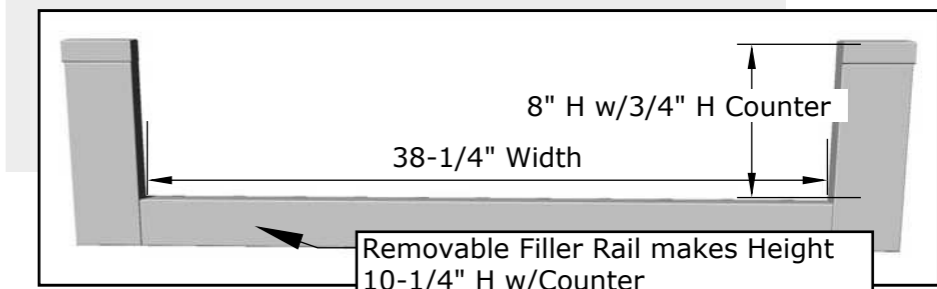
Item No. SCC46GTK2.5



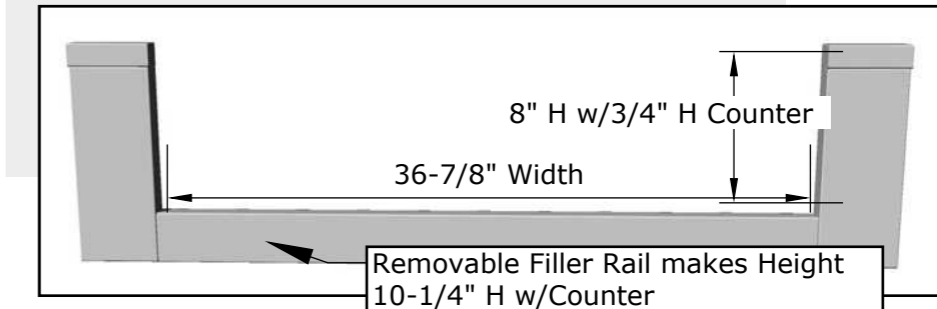
Item No. SCC46GTK3.25



Item No. SCC46GTK3.75



Item No. SCC46GTK4.5



Item No. SCC46GTK5

