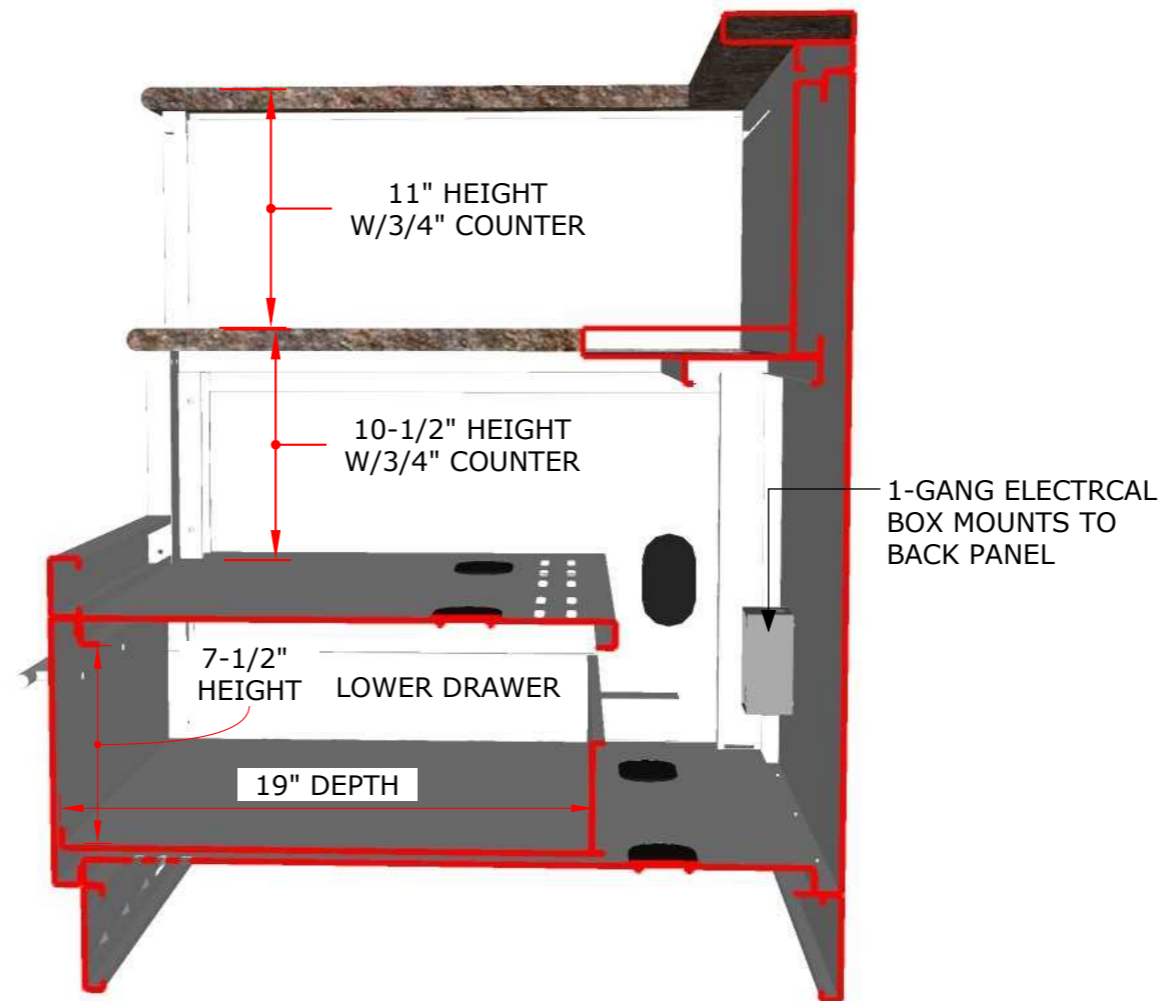
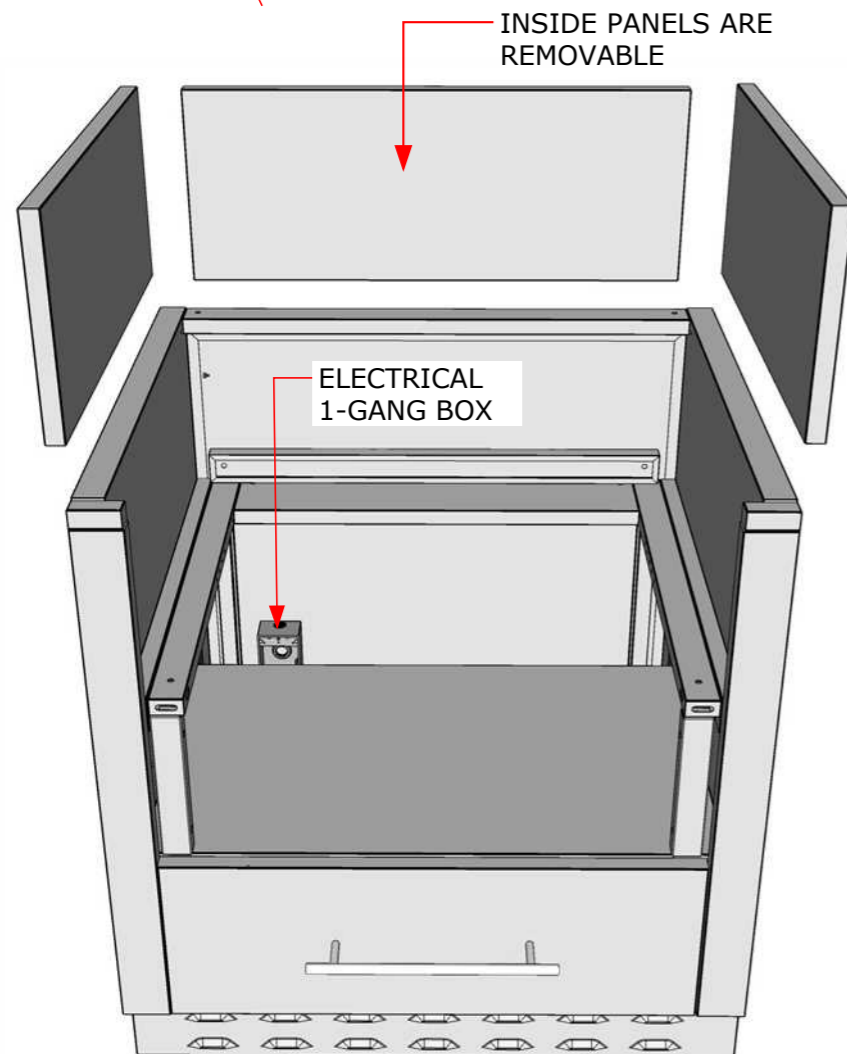
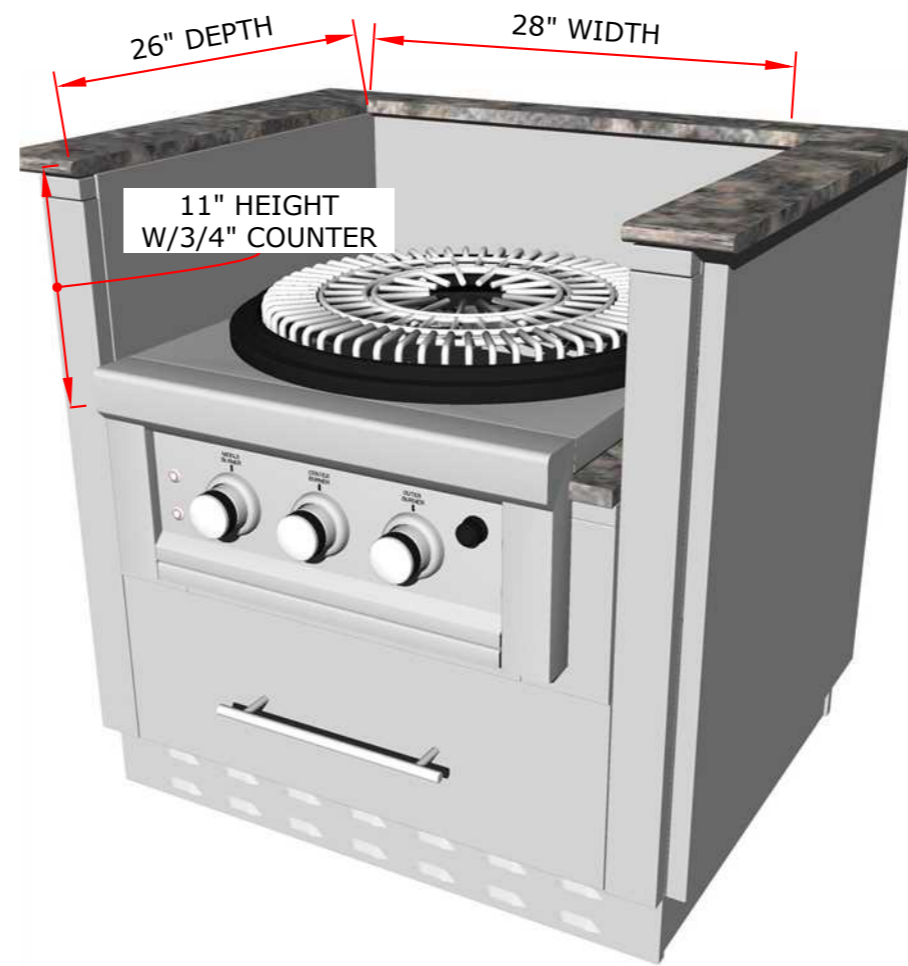
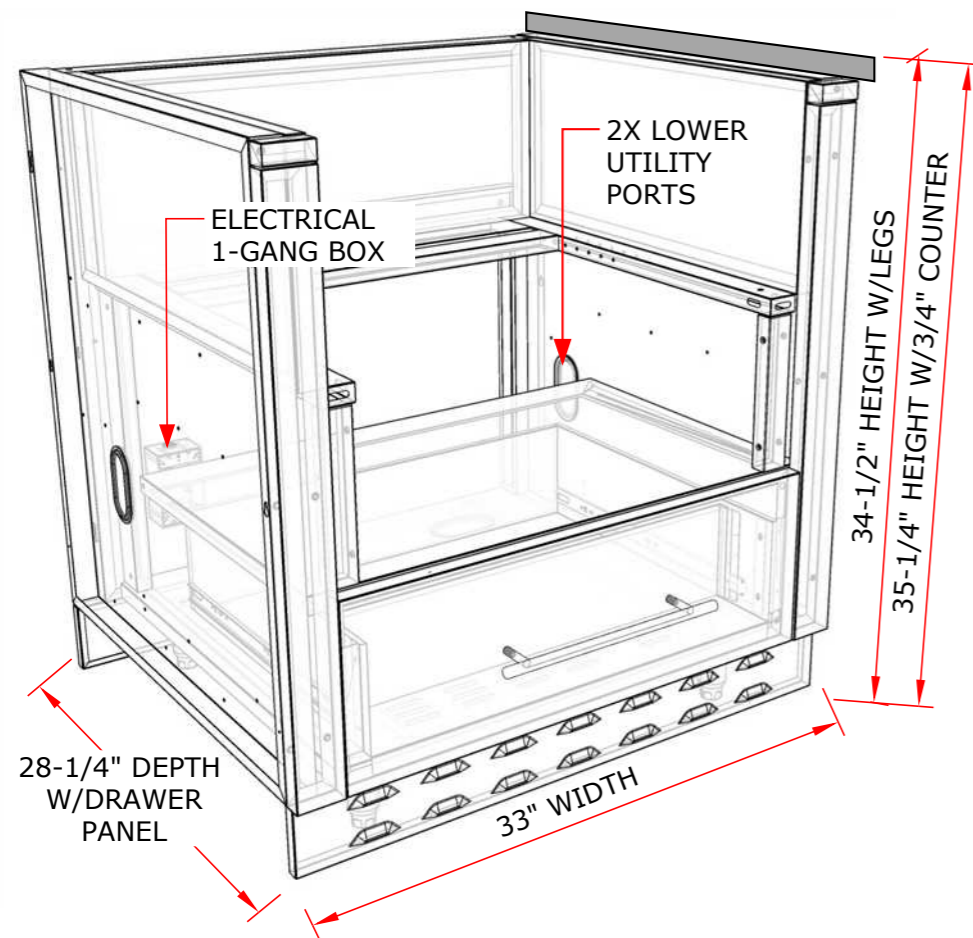


Product Dimensions



SUNSTONE METAL PRODUCTS
 16004 CENTRAL COMMERCE DR.
 PFLUGERVILLE, TEXAS 78660
 Tel: 888.934.9449
 Bus: 512.487.5116
 Fax: 512.487.7016

PRODUCT

33" Power Burner Grill Cabinet

Item No. SAC33PBDC

DESCRIPTION

- Lifetime Structure Warranty
- 304 Stainless Steel Structure
- 304 SS Rod Handles
- Front & Back Kick-Plates
- Easy Pin-Lock Installation
- Soft-Close Drawer Tracks
- Covered Access Ports
- Adjustable Peg-Legs
- Optional Wheel Casters

INCLUDED COMPONENTS

- Front Vented Kick Plate
- Back Solid Kick Plate
- (4) Adjustable Peg Legs

PRODUCT DIMENSIONS

33"W x 28-1/4"D (w/Doors) x 34-1/2"H (w/Legs) or 30-1/2"H (no Legs) or Up to 36" Max Adjustable Height

INSERTABLE PRODUCTS

SUN24PCB

(See next page Trim Kit Guide for other insertable product Brands)

MATERIAL SPECS

20 Gauge 304 Stainless Steel for all panels, 20 Gauge 304 for framing, 304 Stainless Steel for Rod Handles, 201 Stainless Steel for Peg-Legs

SAC33PBDC TRIM-KIT

Disclaimer: The trademarks used in the "Product Option" column below belong to their respective owners who do not sponsor nor are they affiliated with Sunstone Metal Products, L.L.C. The specific product Cut-Out Dimensions have not been directly confirmed by any Sunstone Metal Products LLC, representative or employee. Use own discretion to confirm exact product fit.

Model Number	Sleeve Cut-Out	Product Option
SCC33PBTK19	19" Width x 12-3/4" Height x 24-1/2" Maximum Depth	Firemagic® Power Burner, Lynx® Power Burner
SCC33PBTK20.5	20-1/2" Width x 12-3/4" Height x 24-1/2" Maximum Depth	Coyote® Power Burner
SCC33PBTK21.5	21-1/2" Width x 10-3/8" Height w/Rail or 12-3/4" Height wo/Rail x 24-1/2" Maximum Depth	Alfresco® Power Burner, Bull® Power Burner
SCC33PBTK22	22" Width x 10-3/8" Height w/Rail or 12-3/4" Height wo/Rail x 24-1/2" Maximum Depth	Twin Eagles® Power Burner
SCC33PBTK22.75	22-3/4" Width x 10-3/8" Height w/Rail or 12-3/4" Height wo/Rail x 24-1/2" Maximum Depth	Sunstone® 24" POWER CIRQUE, Hestan® Power Burner

Trim-Kit Sleeve Dimensions

Compatible between 19" to 22-3/4" Width by 10-3/8" to 12-3/4" Max Height with counter at 3/4" Height with Filler Rail installed or removed. (Additional Height can be adjusted by Removing Bottom Filler Rail or by adding a Thicker Counter or Backer Board)

