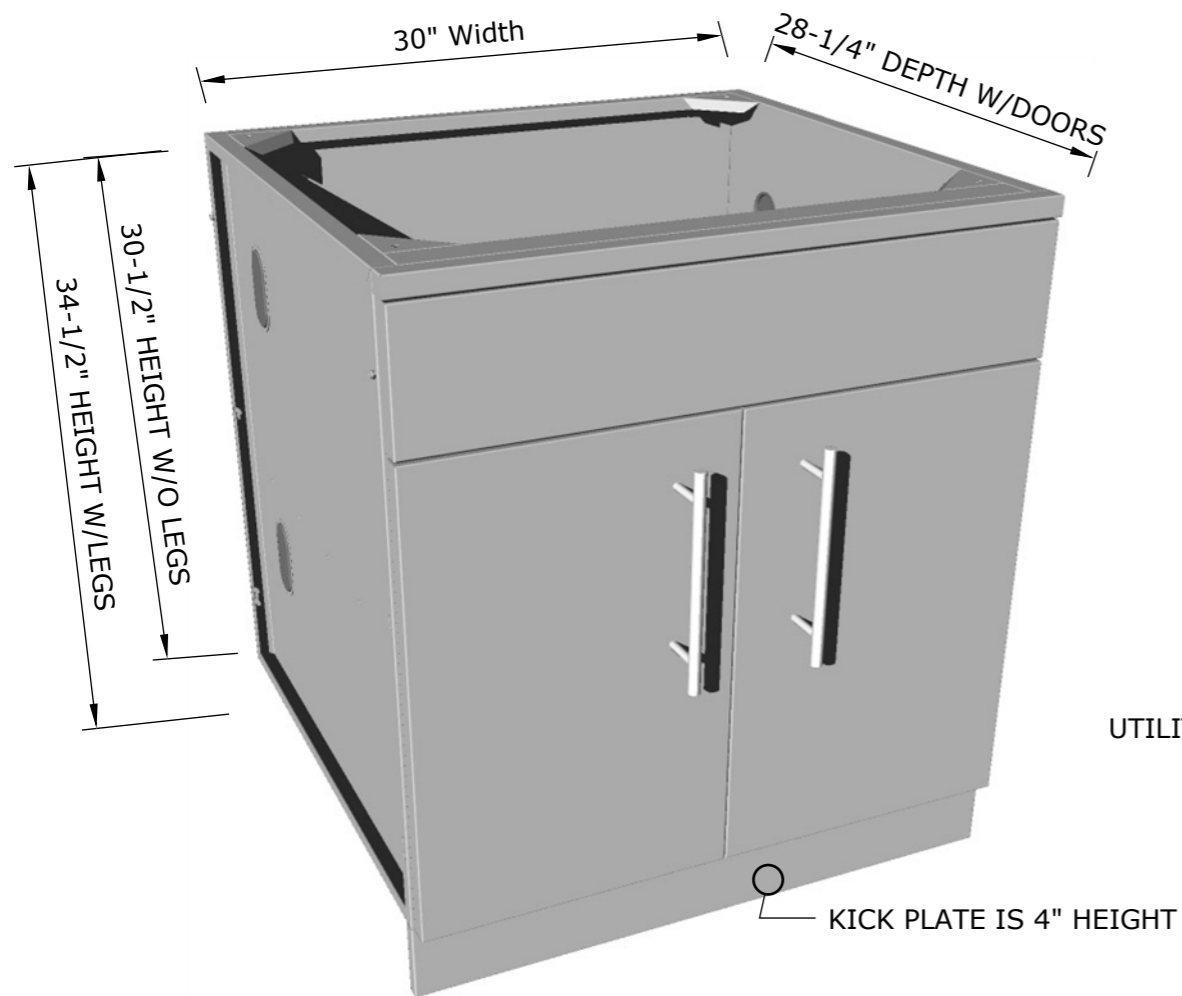
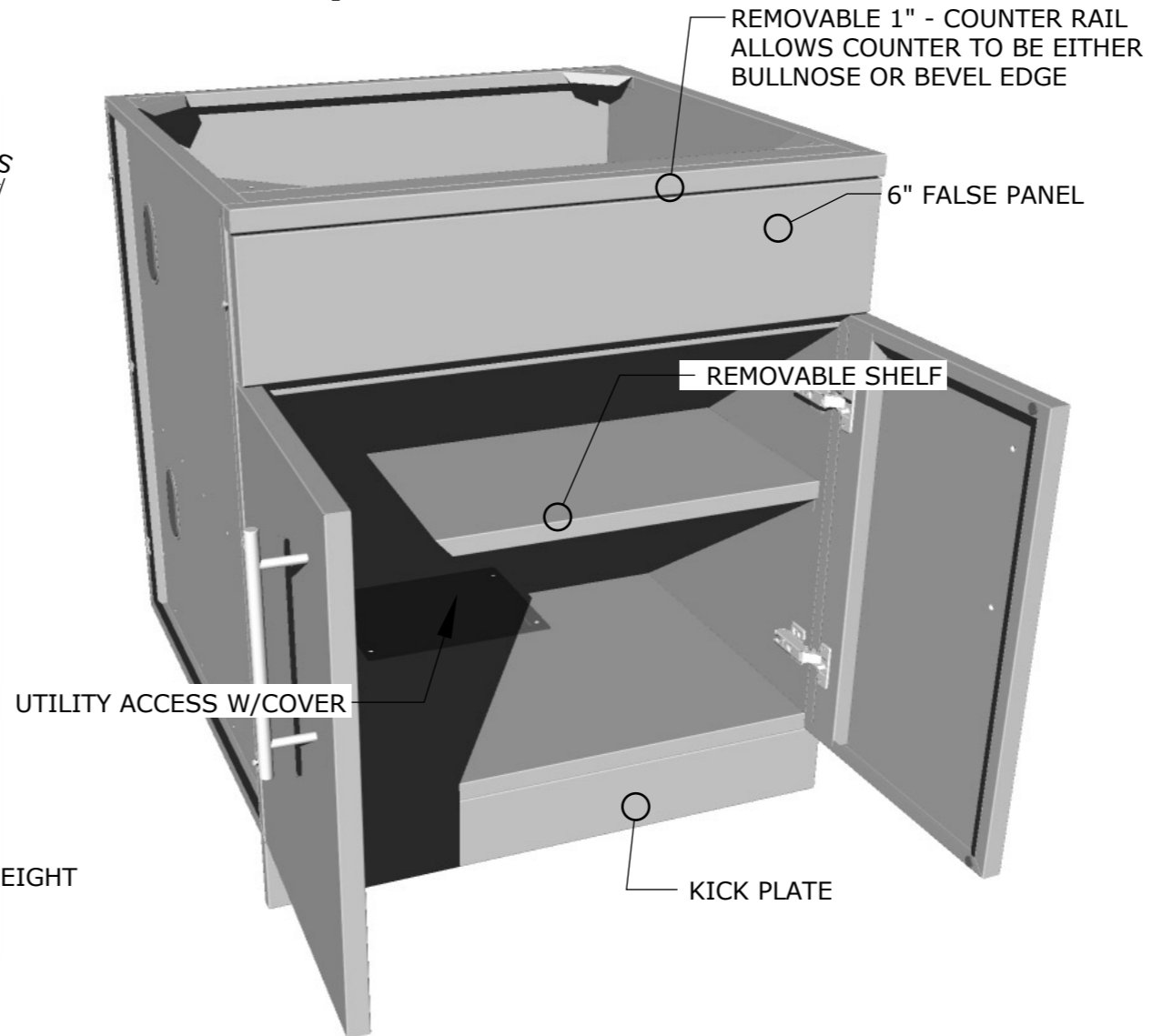


Product Dimensions

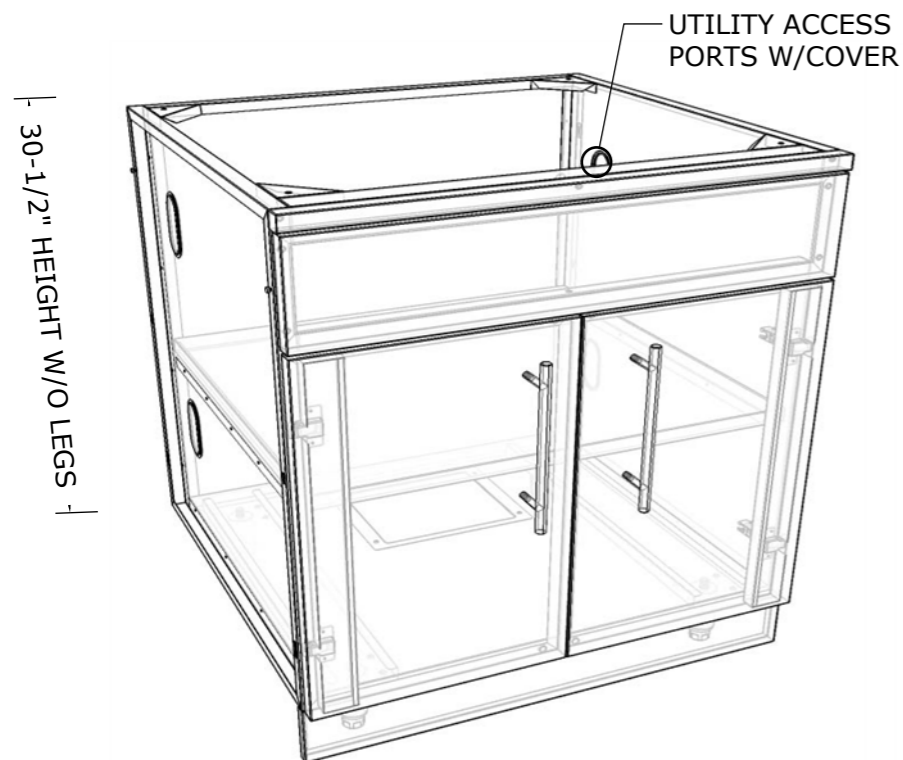


Product Components

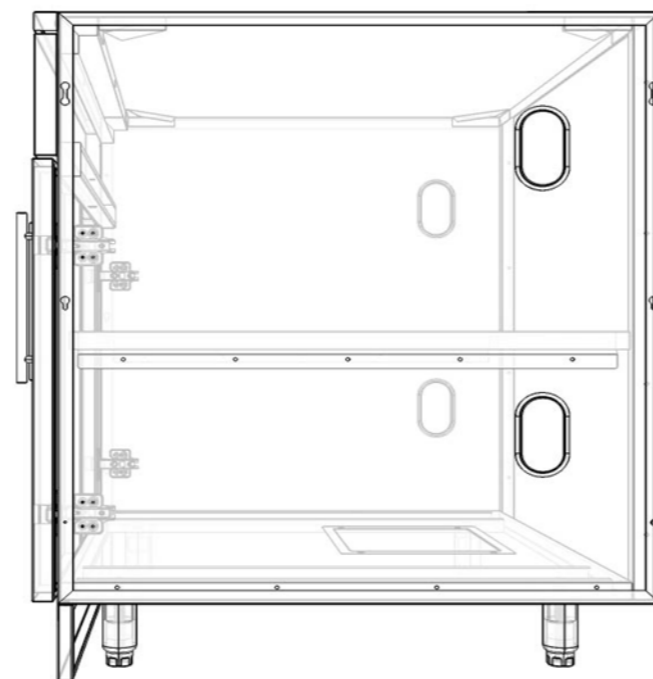


Product Diagrams

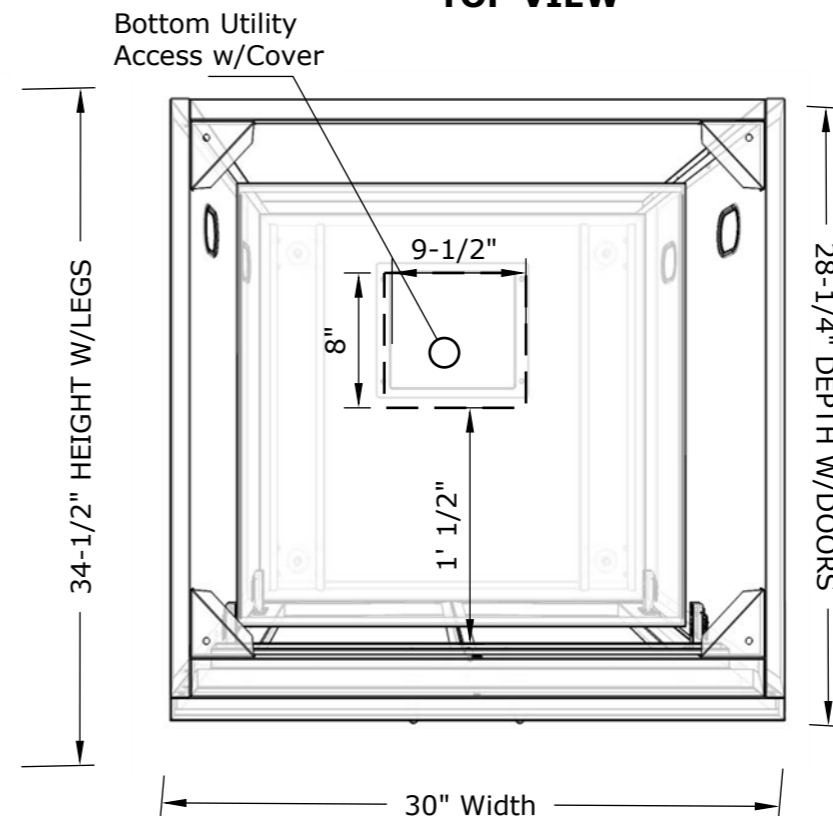
ISO VIEW



SIDE VIEW



TOP VIEW



SUNSTONE METAL PRODUCTS
 16004 CENTRAL COMMERCE DR.
 PFLUGERVILLE, TEXAS 78660
 Tel: 888.934.9449
 Bus: 512.487.5116
 Fax: 512.487.7016

PRODUCT

30" Double Door Cabinet
 w/Shelf & False Top Panel

Item No. SBC30CDD

DESCRIPTION

30" Double Door Cabinet with
 Shelf and False Top Panel.
 Remove Shelf for Sink Installation.

- Lifetime Structure Warranty
- 304 Stainless Steel Structure
- 304 SS Rod Handles
- Front & Back Kick-Plates
- Easy Pin-Lock Installation
- Soft-Close Drawer Tracks
- Covered Access Ports
- Adjustable Peg-Legs
- Optional Wheel Casters

INCLUDED COMPONENTS

- Front Kick Plates
- Back Solid Kick Plate
- (4) Adjustable Peg Legs
- Center Shelf

PRODUCT DIMENSIONS

30"W x 28-1/4"D (w/Doors) x 34-1/2"H (w/Legs) or 30-1/2"H (no Legs) or Upto 36" Max Adjustable Height

INSERT DIMENSIONS

28"Width x 18"Depth

INSERTABLE PRODUCTS

Single Side Burner - 1SSB
 Premium Sink - B-PS21
 Standard Sink - A-SS17
 Drop-In Ice Chest - A-IC

MATERIAL SPECS

304 Stainless Steel entire structure, 18 Gauge for Door Panel, 18 Gauge for Cabinet Box, 18 Gauge for Shelf, Handles are made of Solid 304 Stainless Steel Bar.