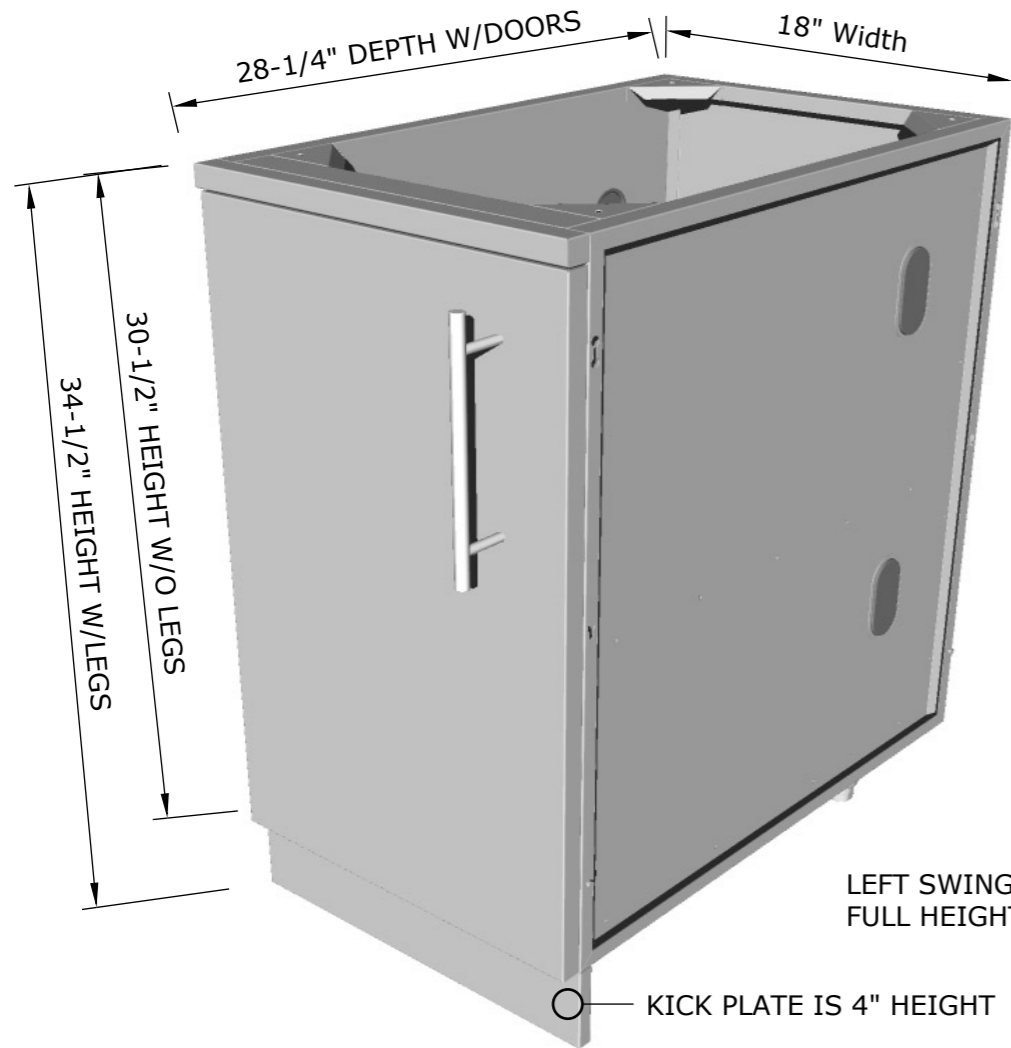
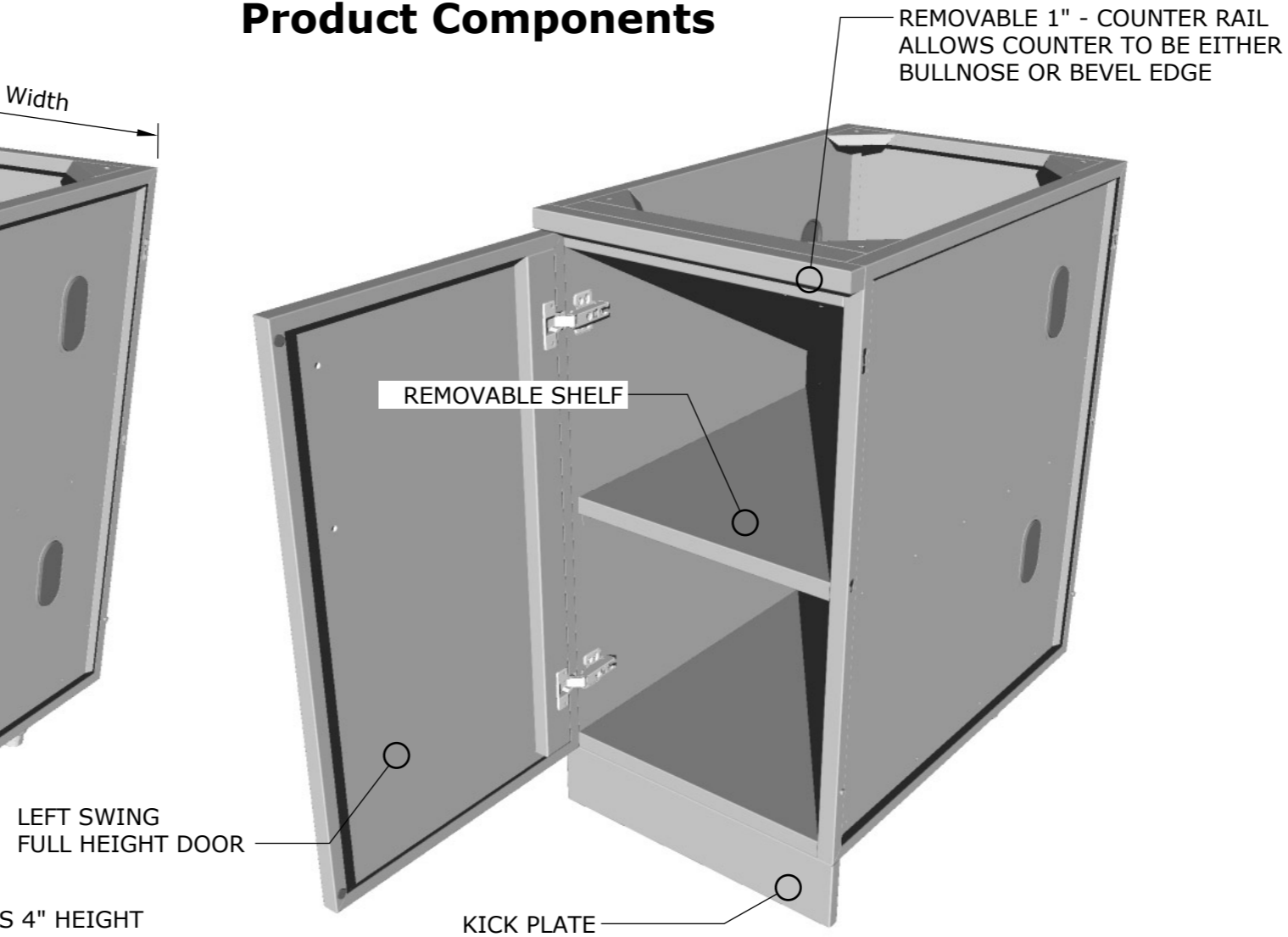


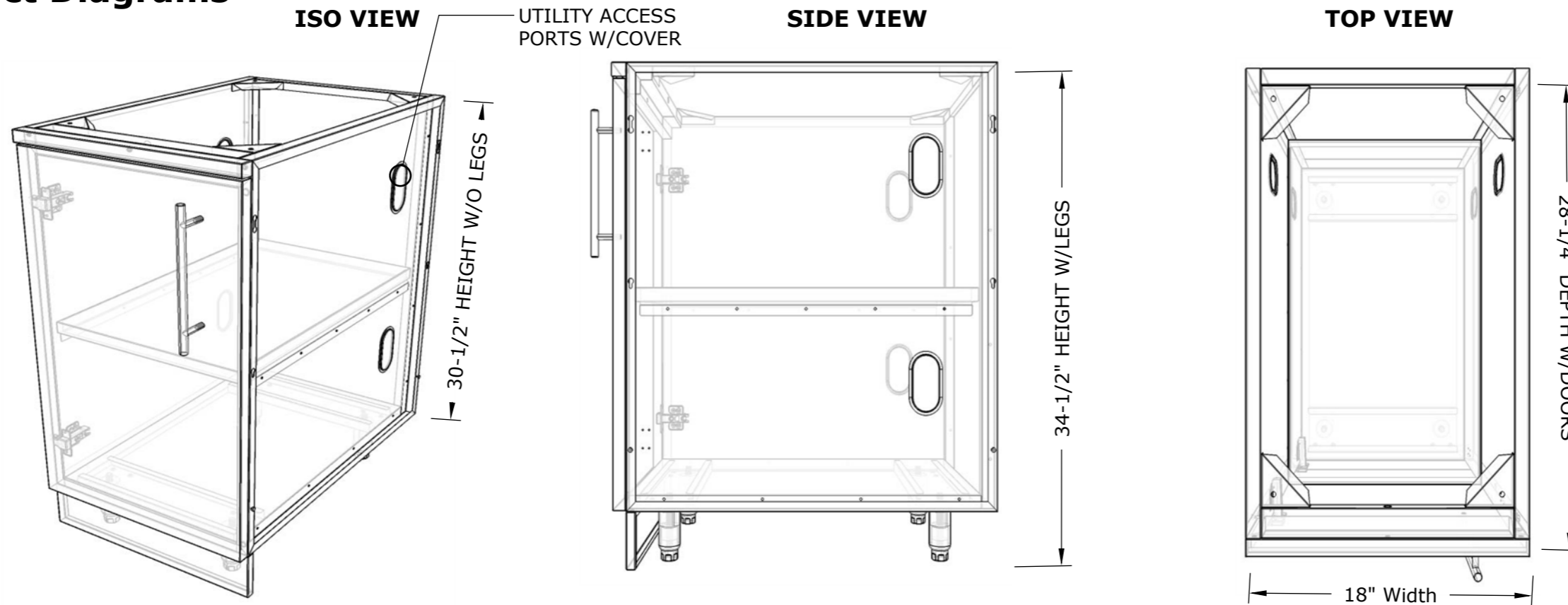
Product Dimensions



Product Components



Product Diagrams



SUNSTONE METAL PRODUCTS
16004 CENTRAL COMMERCE DR.
PFLUGERVILLE, TEXAS 78660
Tel: 888.934.9449
Bus: 512.487.5116
Fax: 512.487.7016

PRODUCT

18" Full Height Left
Swing Door Cabinet

Item No. SBC18FSDL

DESCRIPTION

18" Full Height Left Swing Door
Cabinet with Center Shelf
Included.

- Lifetime Structure Warranty
- 304 Stainless Steel Structure
- 304 SS Rod Handles
- Front & Back Kick-Plates
- Easy Pin-Lock Installation
- Soft-Close Drawer Tracks
- Covered Access Ports
- Adjustable Peg-Legs
- Optional Wheel Casters

INCLUDED COMPONENTS

- Front Kick Plate
- Back Kick Plate
- (4) Adjustable Peg Legs
- (1) Shelf

PRODUCT DIMENSIONS

18"W x 28-1/4"D (w/Door) x 34-
1/2"H (w/Legs) or 30-1/2"H (no
Legs) or Upto 36" Max Adjustable
Height

INSERT DIMENSIONS

16"Width x 18"Depth

INSERTABLE PRODUCTS

Single Side Burner - 1SSB

MATERIAL SPECS

304 Stainless Steel entire
structure, 18 Gauge for Door
Panel, 18 Gauge for Cabinet
Box, 18 Gauge for Shelf,
Handles are made of Solid 304
Stainless Steel Bar.