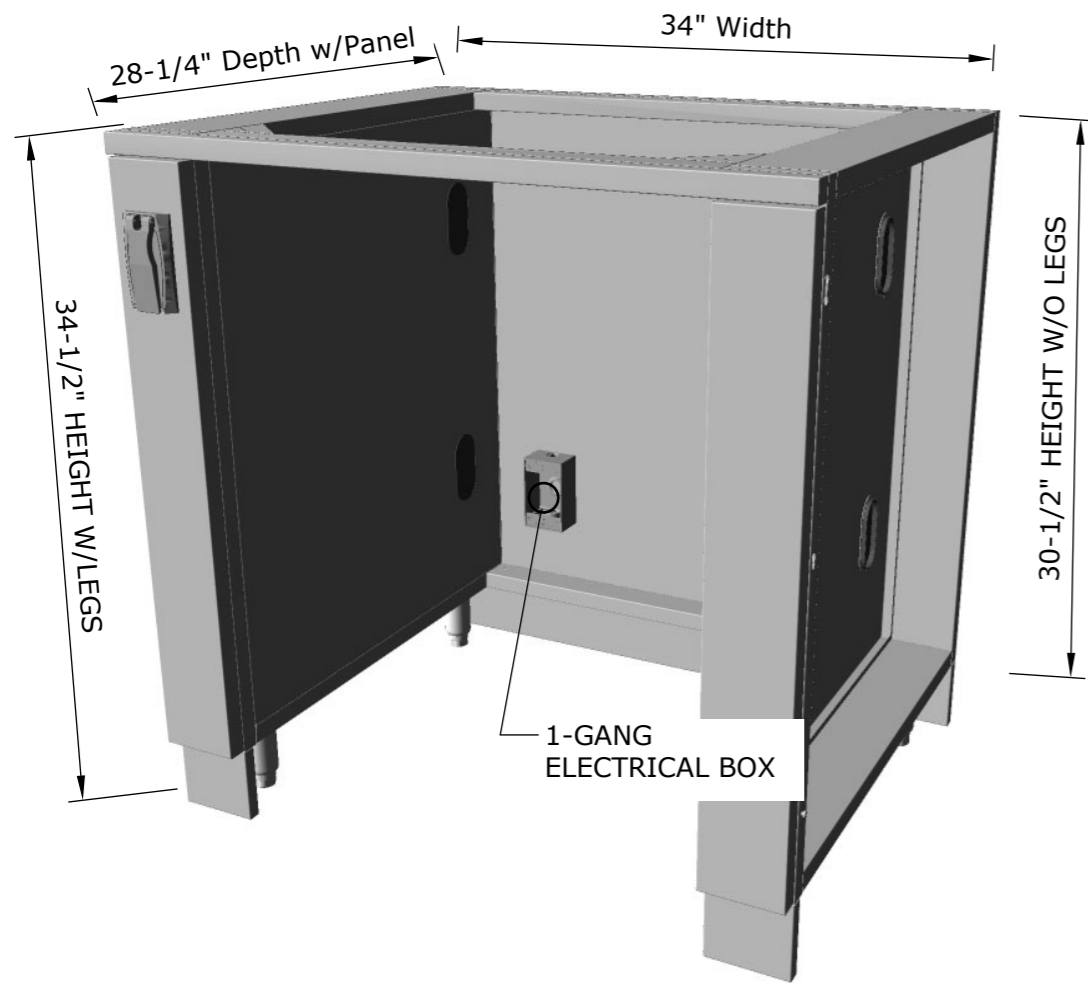


Product Dimensions



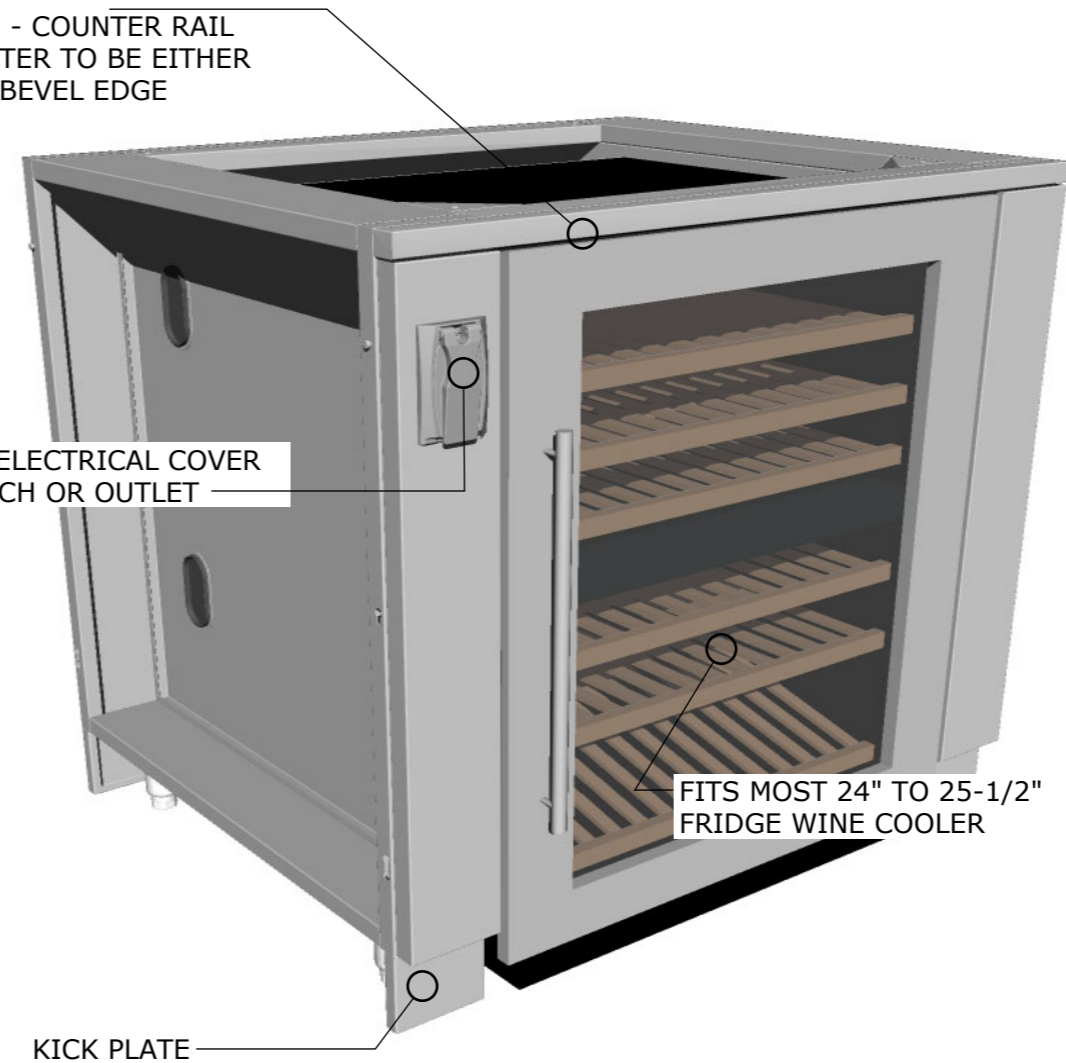
Product Components

REMOVABLE 1" - COUNTER RAIL
ALLOWS COUNTER TO BE EITHER
BULLNOSE OR BEVEL EDGE

OUTSIDE ELECTRICAL COVER
FOR SWITCH OR OUTLET

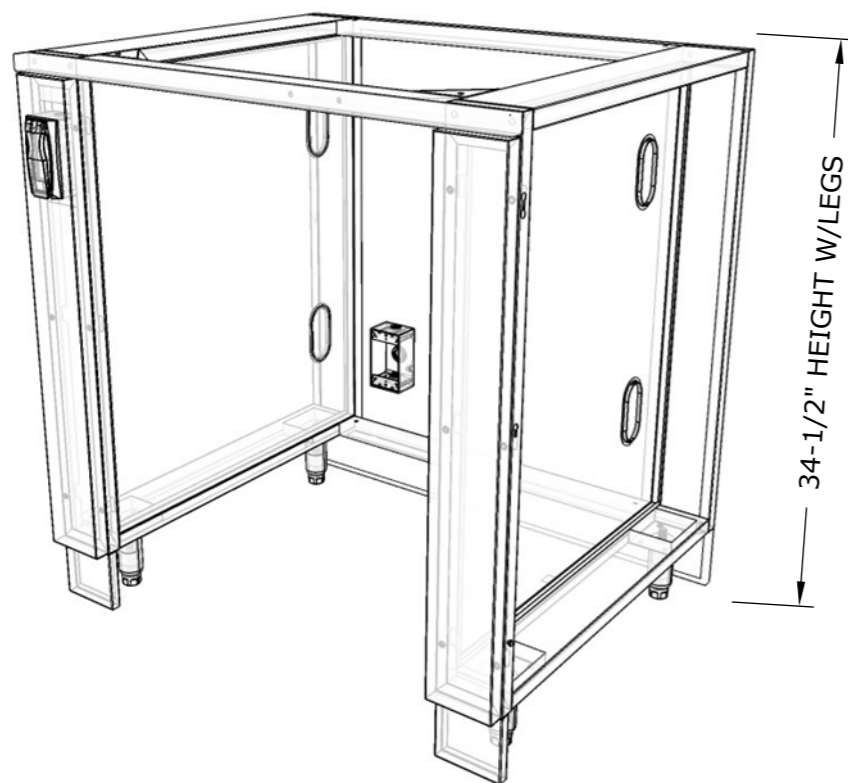
FITS MOST 24" TO 25-1/2"
FRIDGE WINE COOLER

KICK PLATE

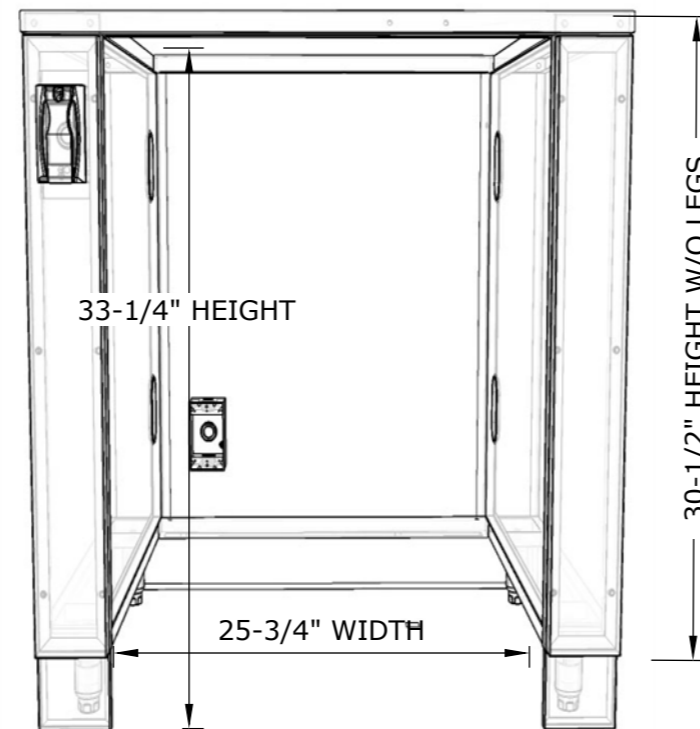


Product Diagrams

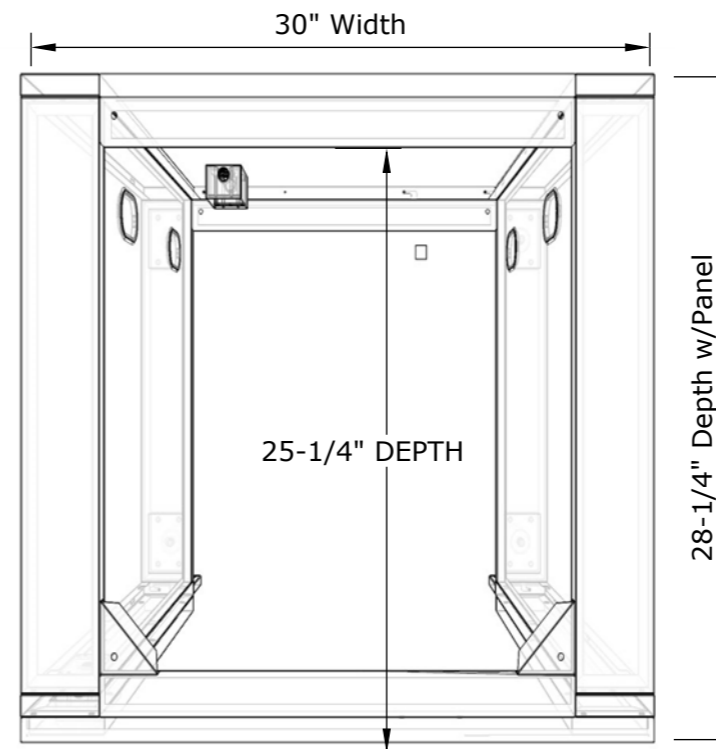
ISO VIEW



FRONT VIEW



TOP VIEW



SUNSTONE METAL PRODUCTS
16004 CENTRAL COMMERCE DR.
PFLUGERVILLE, TEXAS 78660
Tel: 888.934.9449
Bus: 512.487.5116
Fax: 512.487.7016

PRODUCT

34" Appliance For up to 25"
Wide Fridge

Item No. SAC34APC

DESCRIPTION

34" Appliance Cabinet for up to 25" Fridges
& Ice Makers w/Convenient front Electrical
Cover & Interior Back Panel 1-Gang
Electrical Box

- Lifetime Structure Warranty
- 304 Stainless Steel Structure
- 304 SS Rod Handles
- Front & Back Kick-Plates
- Easy Pin-Lock Installation
- Soft-Close Drawer Tracks
- Covered Access Ports
- Adjustable Peg-Legs
- Optional Wheel Casters

INCLUDED COMPONENTS

- Front Kick Plates
- Back Solid Kick Plate
- (4) Adjustable Peg Legs
- Front Electrical Cover
- Back Panel Electrical Box

PRODUCT DIMENSIONS

34"W x 28-1/4"D (w/Panel) x 34-
1/2"H (w/Legs) or 30-1/2"H (no
Legs) or Upto 36" Max Adjustable
Height

INSERT DIMENSIONS

25" Width x 33-1/4" Height x 25-1/4"
Depth

INSERTABLE PRODUCTS

Works with up to 25" Wide
Fridges, Wine Coolers & Ice
Makers

MATERIAL SPECS

304 Stainless Steel entire
structure, 18 Gauge for Door
Panel, 18 Gauge for Cabinet
Box, 18 Gauge for Shelf,
Handles are made of Solid 304
Stainless Steel Bar.